

MARINE FISHERY RESOURCES  
DEVELOPMENT AND MANAGEMENT  
DEPARTMENT OF SEAFDEC

KUALA TERENGGANU, MALAYSIA



SEAFDEC MFRDMD/ST/4

# THE TUNA FISHERIES STATISTICS FOR THE SOUTH CHINA SEA AREA

1996

MARINE FISHERY RESOURCES  
DEVELOPMENT AND MANAGEMENT DEPARTMENT (MFRDMD)  
SOUTHEAST ASIAN FISHERIES DEVELOPMENT CENTER (SEAFDEC)

1999



**THE TUNA FISHERIES STATISTICS  
FOR THE SOUTH CHINA SEA AREA**

1996



**Marine Fishery Resources Development and Management Department**

**Southeast Asian Fisheries Development Center**

National Library of Malaysia      Cataloguing-in-Publication Data

The tuna fisheries statistics for the South China Sea Area.

ISBN 983-9114-08-5

1. Tuna fisheries--South China Sea--Statistics. I. Southeast Asian Fisheries Development Center. II. Marine Fishery Resources Development and Management Department.  
579.7830212

Marine Fishery Resources Development and Management Department  
Southeast Asian Fisheries Development Center  
Fisheries Garden, Chendering  
21080 Kuala Terengganu, Malaysia.  
Tel: 6(09)-6175135 Fax: 6(09)-6175136  
E-mail: [seafdec@po.jaring.my](mailto:seafdec@po.jaring.my)  
<http://agrolink.moa.my/dof/seafdec>

Copyright © 1999 Marine Fishery Resources Development And Management Department (MFRDMD)  
Southeast Asian Fisheries Development Center (SEAFDEC)

All Rights Reserved. No part of this publication may be reproduced, stored in a retrieval system or transmitted in any form or by any means, electronic, mechanical photocopying, recording or otherwise, without prior permission from the Copyright owner.

ISBN 983-9114-08-5

**Marine Fishery Resources Development and Management Department  
Southeast Asian Fisheries Development Center**

**EDITORIAL BOARD for Tuna Fisheries Statistics:**

**Raja Bidin bin Raja Hassan**

and

**Ibrahim bin Johari**

SEAFDEC/MFRDMD  
Kuala Terengganu,  
Malaysia

All Rights Reserved:

No part of this publication may be reproduced,  
stored in a retrieval system or transmitted in any form or by any means,  
electronic, mechanical photocopying, recording or otherwise,  
without prior permission from the Copyright owner.

REPORT OF STATISTICAL BULLETIN

ISBN 983-9114-08-5

## FOREWORD

A Memorandum of Understanding regarding the transfer of responsibility to collate tuna fishery statistics in the waters demarcated as FAO Statistical Area 71 was signed on 17<sup>th</sup> June 1996 between the Food and Agriculture Organization of the United Nations (FAO) and the Southeast Asian Fisheries Development Center (SEAFDEC). With this understanding, SEAFDEC was handed the task of collating and consequently publishing tuna statistics from the area concerned, an important assignment that has previously been undertaken by the FAO

The area denominated as FAO Statistical Area 71 covers the marine waters adjacent to the countries of Brunei Darussalam, Malaysia, the Philippines, Singapore, Thailand, Vietnam, Indonesia and Australia.

The main objective of this activity is to provide interested parties that include scientists, administrators and industry participants with freely available information on the tuna fisheries of the area, for purposes of investment as well as such actions as may be needed for the proper management of these tuna resources. SEAFDEC has requested countries fishing for tuna in the area to provide it with the statistical data that were formerly entrusted to FAO for collation. A meeting among the liaison officers of the countries concerned was convened in 1997 at MFRDMD. Five countries, namely Brunei Darussalam, Indonesia, Japan, Malaysia and the Philippines have provided the requested data for 1996. Hence, the first publication of this Tuna Statistics for the Southeast Asian Region was made possible with the data supplied by these countries. Production of these statistics would be more complete with better support and collaboration from the other SEAFDEC member countries.

On behalf of SEAFDEC, we at MFRDMD would like to express our profound appreciation to the Departments of Fisheries of Brunei Darussalam, Indonesia, Japan, Malaysia and the Philippines for the valuable cooperation given in enabling us to compile and produce the Tuna Fishery Statistics for the Region.



Ismail Taufid Md. Yusoff  
Chief,  
Marine Fishery Resources Development  
And Management Department  
Kuala Terengganu  
Malaysia

## CONTENTS

	Page
<b>EXPLANATORY NOTES</b>	
1. General Notes .....	ix
1-1 Data Collection .....	ix
1-2 Time Reference .....	ix
2. Notes on Statistics .....	ix
2-1 Category of Statistics .....	ix
2-2 Classification and Coverage of Fishing Gears.....	ix
2-3 Classification of Fishing Boats .....	x
2-4 Coverage of Fishing Efforts .....	x
2-5 Others .....	x
 <b>DATA AVAILABILITY</b>	
1. Annual Landing Statistics 1996.....	xi
2. Monthly Landing Statistics 1996.....	xii
 <b>ANNEX</b>	
1. Countries and Sub-areas for the Statistics .....	xiii
2. Classification and Code Number of Species .....	xiv
3. List of Tuna and Tuna - like Species with Species Codes of SEAFDEC and ISSCAAP (FAO) .....	xv
 <b>STATISTICAL TABLES FOR 1996</b>	
1. Annual Landing By Species 1996 .....	1
1-1 Catch and Fishing Effort by Type of Fishing Gear.....	1
1-1-1 Fish Purse Seine	
(1) Malaysia .....	1
(2) Brunei Darussalam .....	2
1-1-2 Trawl Net	
(1) Malaysia .....	3
(2) Brunei Darussalam .....	4
1-1-3 Other Seine	
(1) Malaysia .....	5
1-1-4 Drift Gill Net	
(1) Malaysia .....	6
(2) Brunei Darussalam .....	7
(3) Indonesia .....	8
1-1-5 Hook and Line	
(1) Malaysia .....	9
(2) Brunei Darussalam .....	10
1-1-6 Ring Net	
(1) Brunei Darussalam .....	11

1-1-7	Offshore Longline		
	(1) Indonesia .....		12
1-1-8	Distant-Water Longline		
	(1) Indonesia .....		13
1-1-9	Coastal Pole and Line		
	(1) Indonesia .....		14
1-1-10	Offshore Pole and Line		
	(1) Indonesia .....		15
1-1-11	Small Purse Seine		
	(1) Indonesia .....		16
1-1-12	Large Purse Seine		
	(1) Indonesia .....		17
1-1-13	Seine Net		
	(1) Indonesia .....		18
1-1-14	Hand Line		
	(1) Indonesia .....		19
1-1-15	Troll Line		
	(1) Indonesia .....		20
1-1-16	Unclassified		
	(1) Indonesia .....		21
1-2	Catch and Fishing Effort by Type of Fishing Gear and Size of Management .....		22
1-2-1	Fish Purse Seine		
	(1) Malaysia	Less than 10 tons .....	22
		10 - 25 tons.....	23
		25 - 40 tons.....	24
		40 - 70 tons.....	25
		More than 70 tons.....	26
	(2) Japan .....		27
1-2-2	Trawl Net		
	(1) Malaysia	Less than 10 tons .....	28
		10 - 25 tons.....	29
		25 - 40 tons.....	30
		40 - 70 tons.....	31
		More than 70 tons.....	32
1-2-3	Drift Gill Net		
	(1) Indonesia .....		33
1-2-4	Longline		
	(1) Japan .....		34
1-2-5	Offshore Longline		
	(1) Indonesia .....		35
1-2-6	Distant Water Longline		
	(1) Indonesia .....		36



1-2-7	Pole and Line	37
	(1) Japan .....	
1-2-8	Coastal Pole and Line	38
	(1) Indonesia .....	
1-2-9	Offshore Pole and Line	39
	(1) Indonesia .....	
1-2-10	Small Purse Seine	40
	(1) Indonesia .....	
1-2-11	Seine Net	41
	(1) Indonesia .....	
1-2-12	Large Purse Seine	42
	(1) Indonesia .....	
1-2-13	Hand Line	43
	(1) Indonesia .....	
1-2-14	Troll and Line	44
	(1) Indonesia .....	
1-2-15	Unclassified	
	(1) Indonesia .....	45
	(2) Philippines.....	46
2.	Monthly Landing By Species - 1996 .....	47
2-1	Catch and Fishing Effort by Type of Fishing Gear and by Month.....	47
2-1-1	Hook and Line, Gill Net and Ring Net	
	(1) Brunei Darussalam.....	47
2-1-2	Small Purse Seine	
	(1) Indonesia .....	48
2-1-3	Pole and Line	
	(1) Japan.....	49
2-1-4	Longline	
	(1) Indonesia .....	50
	(2) Japan.....	51
2-1-5	Pole and Line	
	(1) Japan.....	52
2-1-6	Unclassified	
	(1) Malaysia .....	53

2-2	Catch and Fishing Effort by Area .....	54
2-2-1	Unclassified	
	(1) Malaysia Peninsular of Malaysia .....	54
	West Coast of Peninsular.....	55
	East Coast of Peninsular.....	56
	Sabah .....	57
	Sarawak .....	58
	Labuan .....	59
3.	Appendix	
3-1	Common Tuna Species in the South China Sea.....	63
3-2	Graft.....	64
	Tuna Landing in Southeast Asian Region - 1996.....	65
	Tuna Landing by Area in Malaysia - 1996.....	66
	Tuna Landing by Area in Indonesia - 1996.....	66
	Monthly Landing of Tuna in Malaysia - 1996.....	67
	Monthly Landing of Tuna in Brunei - 1996.....	67
	Tuna Landing by Species in Indonesia - 1996.....	68
	Tuna Landing by Species in Philippines - 1996.....	68
	Tuna Landing by Species in Malaysia - 1996.....	69
	Tuna Landing by Species in Brunei Darussalam - 1996.....	69
	Monthly Landing of Tuna by Species in Japan - 1996.....	70
	Monthly Landing of Tuna by Species in Indonesia - 1996.....	70
	Tuna Landing by Type of Management in Indonesia - 1996.....	71
	Tuna Landing by Type of Management in Philippines - 1996.....	71
	Tuna Landing by Type of Management in Malaysia - 1996.....	72
	Tuna Landing by Type of Fishing Gear in Brunei Darussalam - 1996.....	72
	Tuna Landing by Type of Fishing Gear in Malaysia - 1996.....	73
	Tuna Landing by Type of Fishing Gear in Indonesia - 1996.....	73

## EXPLANATORY NOTES

### 1. General Notes

#### 1.1 Data Collection

The data compiled in this Bulletin are, in principle, based upon the returns from the authority concerned in each country to a questionnaire prepared by the Marine Fishery Resources Development and Management Department, Southeast Asian Fisheries Development Center (SEAFDEC/MFRDMD).

#### 1.2 Time Reference

Data in this Bulletin refer to the year 1996.

### 2. Notes on Statistics

#### 2.1 Category of Statistics

1. Annual Landing Statistics — Annual landing data by fishing gear and boat size category are described (whole country and sub-areas).
2. Monthly Landing Statistics — Monthly landing data by fishing gear and boat size category are described (whole Country and sub-areas).
3. Specific Nominal Data 1996 — Tuna Transshipment Record.

#### 2.2 Classification and Coverage of Fishing Gears

Landing data of seven types of fishing gear {(1)-(7)} as shown in the following table are compiled in this issue. A specific number is given for each type of fishing gears reported.

Major Group	Particular Name
1. Longline	(1) Coastal longline (2) Off-shore longline (3) Distant-water longline
2. Pole and Line	(4) Coastal pole and line (5) Off-shore pole and line (6) Distant-water pole and line
3. Purse Seine	(7) Purse seine with payao (8) Small purse seine (9) Medium purse seine (10) Large purse seine (11) Ring net (12) Ring net with payao
4. Gill Net	(13) Drift gill net
5. Hand Line	(14) Hand line with payao (15) Hook and line
6. Troll Line	(16) Single (17) Multiple Hook
7. Unclassified	(18) Bag net (19) Seine net

### **2.3 Classification of Fishing Boats**

In Indonesia, fishing boats are classified into classes by their tonnage (GRT class), which comprise ten categories i.e., (1) less than 5 tons, (2) from 10 to 15 tons, (3) from 15 to 25 tons, (4) less than 25 (5) less than 30, (6) from 30 to 50 tons, (7) less than 50, (8) from 60 to 100 tons, (9) above 100 tons and (10) above 200 tons.

In Malaysia, fishing boats are classified into classes by their tonnage (GRT class), which comprise five categories i.e., (1) less than 10 tons, (2) from 10 to 25 tons, (3) from 25 to 40 tons, (4) from 40 to 70 tons, and (5) over 70 tons.

### **2.4 Coverage of Fishing Efforts**

The units of fishing effort are classified for each class boat size.

1. Number of fishing units
2. Number of trips
3. Number of days
4. Number of hauls
5. Number of hours (for trawling - operating hours are from start shooting until start hauling of the net, and excluding searching hours for fish schools in purse seining)
6. Number of hooks (Longline only)

### **2.5 Others**

Countries and sub-areas for the statistics, classification and code number of species, and list of marine species with codes of SEAFDEC and ISSCAAP (FAO) are shown in ANNEX.

## DATA AVAILABILITY

### 1. Annual Landing Statistics 1996

#### Catch and Fishing Effort by Type of Fishing Gear

Fish Purse Seine	:	<i>Malaysia and Brunei Darussalam</i>
Trawl Net	:	<i>Malaysia and Brunei Darussalam</i>
Other Seine	:	<i>Malaysia</i>
Drift Gill Net	:	<i>Malaysia and Brunei Darussalam</i>
Hook and Line	:	<i>Malaysia and Brunei Darussalam</i>
Ring Net	:	<i>Brunei Darussalam</i>
Offshore Longline	:	<i>Indonesia</i>
Distant Water LL	:	<i>Indonesia</i>
Coastal Pole and Line	:	<i>Indonesia</i>
Offshore Pole and Line	:	<i>Indonesia</i>
Small Purse Seine	:	<i>Indonesia</i>
Large Purse Seine	:	<i>Indonesia</i>
Seine Net	:	<i>Indonesia</i>
Hand Line	:	<i>Indonesia</i>
Troll Line	:	<i>Indonesia</i>
Unclassified	:	<i>Indonesia</i>

#### Catch and Fishing Effort by Type of Fishing Gear and Size of Management

Fish Purse Seine	:	<i>Malaysia and Japan</i>
Trawl Net	:	<i>Malaysia</i>
Drift Gill Net	:	<i>Indonesia</i>
Longline	:	<i>Japan and Indonesia</i>
Distant Water LL	:	<i>Indonesia</i>
Coastal Pole and Line	:	<i>Japan and Indonesia</i>
Offshore Pole and Line	:	<i>Indonesia</i>
Small Purse Seine	:	<i>Indonesia</i>
Seine Net	:	<i>Indonesia</i>
Large Purse Seine	:	<i>Indonesia</i>
Hand Line	:	<i>Indonesia</i>
Troll Line	:	<i>Indonesia</i>
Unclassified	:	<i>Indonesia and Philippines</i>

## 2. Monthly Landing Statistics 1996

### Catch and Fishing Effort by Type of Fishing Gear and by Month

Hook and Line	:	<i>Brunei</i>
Gill Net	:	<i>Brunei</i>
Ring Net	:	<i>Brunei</i>
Small Purse Seine	:	<i>Indonesia and Japan</i>
Longline	:	<i>Indonesia and Japan</i>
Pole and Line	:	<i>Japan</i>
Unclassified	:	<i>Malaysia</i>

## ANNEX

### 1. Countries and Sub-areas for the Statistics

Countries and sub-areas used in landing statistics are as follows:

- (1) Brunei
- (2) Indonesia
  - 2.1 West Coast of Sumatra
  - 2.2 South Coast of Java
  - 2.3 Malacca Straits
  - 2.4 East Coast of Sumatra
  - 2.5 North Coast of Java
  - 2.6 Bali and Nusa Tenggara
  - 2.7 Kalimantan
  - 2.8 Sulawesi
  - 2.9 Maluku and Irian Jaya
- (3) Malaysia
  - 3.1 West Coast of Peninsular Malaysia
  - 3.2 East Coast of Peninsular Malaysia
  - 3.3 Sabah
  - 3.4 Sarawak
  - 3.5 Labuan
- (4) Philippines
  - 4.1 Luzon
  - 4.2 Visayas
  - 4.3 Mindanao
- (5) Japan

## 2. Classification and Code Number of Species

### 1. Catch by Species

The catch should be categorized by species (group). The standard statistical classification of marine species was amended based on proposal made during the Seventh Regional Workshop on Fishery Statistics (1989) which was revised by taking account the comments from Member Countries.

### 2. Species Code Number

The species code number previously assigned by SEAFDEC Bulletin was changed from a "three-digit number" to "four-digit number". The four-digit number will be added to the list to allow for further sub-division of the species groups when required.

### 3. Definition of Species Code Number

The first two digits show the group number taken from ISSCAAP (FAO Yearbook). This group number should not be changed, even if the ISSCAAP grouping has changed. The last two digits show the particular species within a group, starting from 01.

### 4. Names of Family

In all cases the family names of fish species have been taken from a single reference (Greenwood, P. H., D. E. Rosen, S. H. Weitzman and G. S. Myers. 1966. Phyletic studies of teleostean fishes, with a provisional classification of living forms. Bull. Amer. Mus. Nat. Hist., 131 (4): 339-456) to allow clear selection, without taxonomical confusion, of teleostean fishes.

### 5. English and Scientific Name

As the English names for species vary quite considerably, the species codes have been based on the scientific name of the species.



3. List of Tuna and Tuna-like Species with Species Codes of SEAFDEC and ISSCAAP (FAO)

ISSCAAP			SEAFDEC		
Div.	Group	Code	Name	Code No.	Family/Scientific name
3.	36. Tunas	SKJ	1. Skipjack tuna	3601	Scombridae - <i>Katsuwonus pelamis</i>
		YFT	2. Yellowfin tuna	3602	Scombridae - <i>Thunnus albacares</i>
		BET	3. Big-eye tuna	3603	Scombridae - <i>Thunnus obesus</i>
		LOT	4. Longtail tuna	3604	Scombridae - <i>Thunnus tonggol</i>
		ALB	5. Albacore	3605	Scombridae - <i>Thunnus alalunga</i>
		KAW	6. Eastern little tuna	3606	Scombridae - <i>Euthynnus affinis</i>
		FRZ	7. Frigate tuna and bullet tuna	3607	Scombridae - <i>Auxis spp</i>
		BIL	8. Indo-Pacific swordfish, sailfishes and marlins	3608	Istiophoridae - <i>Istiophorus spp.</i> <i>Makaira spp.</i>
		XIP			Xiphiidae - <i>Xiphias spp.</i>
		COM	9. Narrow-barred king mackerel	3609	Scombridae - <i>Scomberomorus commerson</i>
		GUT	10. King mackerels	3610	Scombridae - <i>Scomberomorus guttatus</i>
		STS	11. Streaked seerfish	3611	Scombridae - <i>Scomberomorus lineolatus</i>
		FRI	12. Frigate tuna	3612	Scombridae - <i>Auxis thazard</i>
		BLT	13. Bullet tuna	3613	Scombridae - <i>Auxis rochei</i>
		SBF	14. Southern bluefin tuna	3614	Scombridae - <i>Thunnus maccoyii</i>
		BIP	15. Indo-pacific bonito	3615	Scombridae - <i>Sarda orientalis</i>
		TUN	16. Tunas and bonito NEI	3616	Scombridae - <i>Thunini and sardini NEI</i>
		WAH	17. Wahoo	3617	Scombridae - <i>Acanthocybium solandri</i>
		KGX	18. Seerfishes NEI	3618	Scombridae - <i>Scomberini NEI</i>
		SWO	19. Swordfish	3619	Xiphiidae - <i>Xiphias gladius</i>
		SFA	20. Indo-pacific sailfish	3620	Istiophoridae - <i>Istiophorus pterygerus</i>
		BLM	21. Black marlin	3621	Istiophoridae - <i>Makaira indica</i>
		BLZ	22. Indo-pacific blue marlin	3622	Istiophoridae - <i>Makaira mazara</i>
		MLS	23. Striped marlin	3623	<i>Tetrapturus audax</i>
		OTH	24. Other NEI	3624	<i>Scombridae and xiphioides</i>





STATISTICAL TABLES FOR 1999

1 ANNUAL LANDING BY SPECIES - 1996

1.1 Catch and Fishing Effort by Type of Fishing Gear

1.1.1 Fish Purse Seine

(1) Malaysia

Unit: Tonnes

Unit of fishing effort	Sub-area		Total	West Coast of Peninsular	East Coast of Peninsular	Sabah	Sarawak	Labuan
	Species (group)	Code No.						
No. of fishing units			5,511	2,266	3,245	-	-	-
No. of trips			60,167	27,774	32,393	-	-	-
No. of days			87,134	38,705	48,429	-	-	-
No. of hauls			201,907	73,955	127,952	-	-	-
TOTAL CATCH			17,913	5,748	4,664	4,009	51	3,441
			Total	West Coast P	East Coast P	Sabah	Sarawak	Labuan
Skipjack tuna		SKJ		-	-	-	-	-
Yellowfin tuna		YFT		-	-	-	-	-
Big-eye tuna		BET		-	-	-	-	-
Longtail tuna		LOT		-	-	-	-	-
Albacore		ALB		-	-	-	-	-
Eastern little tuna		KAW		-	-	-	-	-
Frigate and bullet tuna		FRZ		-	-	-	-	-
Indo-Pacific swordfish, sailfish and marlin		BIL	5	0	5	0	0	0
Narrow-barred king mackerel		COM		-	-	-	-	-
King mackerel		GUT		-	-	-	-	-
Streked seerfish		STS		-	-	-	-	-
Frigate tuna		FRI		-	-	-	-	-
Bullet tuna		BLT		-	-	-	-	-
Southern bluefin tuna		SBF		-	-	-	-	-
Indo-Pacific bonito		BIP		-	-	-	-	-
Tunas and bonito NEI		TUN	17,383	5,629	4,530	3,835	47	3,342
Wahoo		WAH		-	-	-	-	-
Seerfish NEI		KGX	525	119	129	174	4	99
Swordfish		SWO		-	-	-	-	-
Indo-Pacific sailfish		SFA		-	-	-	-	-
Black marlin		BLM		-	-	-	-	-
Indo-Pacific blue marlin		BLZ		-	-	-	-	-
Striped marlin		MLS		-	-	-	-	-
Other NEI		OTH		-	-	-	-	-

1 ANNUAL LANDING BY SPECIES - 1996

1.1 Catch and Fishing Effort by Type of Fishing Gear

1.1.1 Fish Purse Seine

(2) Brunei Darussalam

Unit: Tonnes

Unit of fishing effort		Total
No. of fishing units		
No. of trips		
No. of days		
No. of hauls		
TOTAL CATCH		0.21
Species (group)		Total
Skipjack tuna	SKJ	3601
Yellowfin tuna	YFT	3602
Big-eye tuna	BET	3603
Longtail tuna	LOT	3604
Albacore	ALB	3605
Eastern little tuna	KAW	3606
Frigate and bullet tuna	FRZ	3607
Indo-Pacific swordfish, sailfish and marlin	BIL	3608
Narrow-barred king mackerel	COM	3609
King mackerel	GUT	3610
Streked seerfish	STS	3611
Frigate tuna	FRI	3612
Bullet tuna	BLT	3613
Southern bluefin tuna	SBF	3614
Indo-Pacific bonito	BIP	3615
Tunas and bonito NEI	TUN	3616
Wahoo	WAH	3617
Seerfish NEI	KGX	3618
Swordfish	SWO	3619
Indo-Pacific sailfish	SFA	3620
Black marlin	BLM	3621
Indo-Pacific blue marlin	BLZ	3622
Striped marlin	MLS	3623
Other NEI	OTH	3624
		0.21

1 ANNUAL LANDING BY SPECIES - 1996

1.1 Catch and Fishing Effort by Type of Fishing Gear

1.1.2 Trawl Net

(1) Malaysia

Unit: Tonnes

Unit of fishing effort	Sub-area	Total	West Coast of Peninsular	East Coast of Peninsular	Sabah	Sarawak	Labuan
No. of fishing units		62,337	48,385	13,952	-	-	-
No. of trips		846,963	725,983	120,980	-	-	-
No. of days		1,117,900	886,569	231,331	-	-	-
No. of hauls		3,500,542	2,653,699	846,843	-	-	-
TOTAL CATCH							
		4,164	2,259	665	286	673	281
		Total	West Coast P	East Coast P	Sabah	Sarawak	Labuan
Skipjack tuna			-	-	-	-	-
Yellowfin tuna			-	-	-	-	-
Big-eye tuna			-	-	-	-	-
Longtail tuna			-	-	-	-	-
Albacore			-	-	-	-	-
Eastern little tuna			-	-	-	-	-
Frigate and bullet tuna			-	-	-	-	-
Indo-Pacific swordfish, sailfish and marlin		0	0	0	0	0	0
Narrow-barred king mackerel			-	-	-	-	-
King mackerel			-	-	-	-	-
Streked seerfish			-	-	-	-	-
Frigate tuna			-	-	-	-	-
Bullet tuna			-	-	-	-	-
Southern bluefin tuna			-	-	-	-	-
Indo-Pacific bonito			-	-	-	-	-
Tunas and bonito NEI		326	193	13	0	43	77
Wahoo			-	-	-	-	-
Seerfish NEI		3838	2066	652	286	630	204
Swordfish			-	-	-	-	-
Indo-Pacific sailfish			-	-	-	-	-
Black marlin			-	-	-	-	-
Indo-Pacific blue marlin			-	-	-	-	-
Striped marlin			-	-	-	-	-
Other NEI			-	-	-	-	-





# 1 ANNUAL LANDING BY SPECIES - 1996

## 1.1 Catch and Fishing Effort by Type of Fishing Gear

### 1.1.3 Other Seine (1) Malaysia

Unit: Tonnes

Unit of fishing effort	Sub-area		Total	West Coast of Peninsular	East Coast of Peninsular	Sabah	Sarawak	Labuan
	Species (group)	Code No.						
No. of fishing units			8,206	7,849	357	-	-	-
No. of trips			154,339	149,319	5,020	-	-	-
No. of days			151,470	146,430	5,040	-	-	-
No. of hauls			1,014,984	994,817	20,167	-	-	-
TOTAL CATCH			7,214	0	20	7,194	0	0
			Total	West Coast P	East Coast P	Sabah	Sarawak	Labuan
Skipjack tuna		SKJ		-	-	-	-	-
Yellowfin tuna		YFT		-	-	-	-	-
Big-eye tuna		BET		-	-	-	-	-
Longtail tuna		LOT		-	-	-	-	-
Albacore		ALB		-	-	-	-	-
Eastern little tuna		KAW		-	-	-	-	-
Frigate and bullet tuna		FRZ		-	-	-	-	-
Indo-Pacific swordfish, sailfish and marlin		BIL	2	-	0	2	-	-
Narrow-barred king mackerel		COM		-	-	-	-	-
King mackerel		GUT		-	-	-	-	-
Straked seerfish		STS		-	-	-	-	-
Frigate tuna		FRI		-	-	-	-	-
Bullet tuna		BLT		-	-	-	-	-
Southern bluefin tuna		SBF		-	-	-	-	-
Indo-Pacific bonito		BIP		-	-	-	-	-
Tunas and bonito NEI		TUN	7,212	-	20	7,192	-	-
Wahoo		WAH		-	-	-	-	-
Seerfish NEI		KGX	0	-	0	0	-	-
Swordfish		SWO		-	-	-	-	-
Indo-Pacific sailfish		SFA		-	-	-	-	-
Black marlin		BLM		-	-	-	-	-
Indo-Pacific blue marlin		BLZ		-	-	-	-	-
Striped marlin		MLS		-	-	-	-	-
Other NEI		OTH		-	-	-	-	-

1 ANNUAL LANDING BY SPECIES - 1996

1.1 Catch and Fishing Effort by Type of Fishing Gear

1.1.4 Drift Gill Net

(1) Malaysia

Unit: Tonnes

Unit of fishing effort	Sub-area		Total	West Coast of Peninsular	East Coast of Peninsular	Sabah	Sarawak	Labuan
	Species (group)	CODES						
No. of fishing units			142,472	128,589	13,883	-	-	-
No. of trips			2,112,515	1,909,738	202,777	-	-	-
No. of days			2,154,111	1,945,360	208,751	-	-	-
No. of hauls			5,697,737	5,037,256	660,481	-	-	-
TOTAL CATCH			12,158	2,036	869	5,369	3,471	413
			Total	West Coast P	East Coast P	Sabah	Sarawak	Labuan
Skipjack tuna		SKJ		-	-	-	-	-
Yellowfin tuna		YFT		-	-	-	-	-
Big-eye tuna		BET		-	-	-	-	-
Longtail tuna		LOT		-	-	-	-	-
Albacore		ALB		-	-	-	-	-
Eastern little tuna		KAW		-	-	-	-	-
Frigate and bullet tuna		FRZ		-	-	-	-	-
Indo-Pacific swordfish, sailfish and marlin		BIL	218	-	18	153	-	47
Narrow-banded king mackerel		COM		-	-	-	-	-
King mackerel		GUT		-	-	-	-	-
Streked seerfish		STS		-	-	-	-	-
Frigate tuna		FRI		-	-	-	-	-
Bullet tuna		BLT		-	-	-	-	-
Southern bluefin tuna		SBF		-	-	-	-	-
Indo-Pacific bonito		BIP		-	-	-	-	-
Tunas and bonito NEI		TUN	5,034	356	280	2,360	1,839	199
Wahoo		WAH		-	-	-	-	-
Seerfish NEI		KGX	6,906	1,680	571	2,856	1,632	167
Swordfish		SWO		-	-	-	-	-
Indo-Pacific sailfish		SFA		-	-	-	-	-
Black marlin		BLM		-	-	-	-	-
Indo-Pacific blue marlin		BLZ		-	-	-	-	-
Striped marlin		MLS		-	-	-	-	-
Other NEI		OTH		-	-	-	-	-

1 ANNUAL LANDING BY SPECIES - 1996

1.1 Catch and Fishing Effort by Type of Fishing Gear

1.1.4 Drift Gill Net

(2) Brunei Darussalam

Unit: Tonnes

Unit of fishing effort		TOTAL CATCH		Total
No. of fishing units	No. of trips	Species (group)	CODES	Code No.
No. of days	No. of hauls			
		Skipjack tuna	SKJ	3601
		Yellowfin tuna	YFT	3602
		Big-eye tuna	BET	3603
		Longtail tuna	LOT	3604
		Albacore	ALB	3605
		Eastern little tuna	KAW	3606
		Frigate and bullet tuna	FRZ	3607
		Indo-Pacific swordfish, sailfish and marlin	BIL	3608
		Narrow-barrred king mackerel	COM	3609
		King mackerel	GUT	3610
		Streked seerfish	STS	3611
		Frigate tuna	FRI	3612
		Bullet tuna	BLT	3613
		Southern bluefin tuna	SBF	3614
		Indo-Pacific bonito	BIP	3615
		Tunas and bonito NEI	TUN	3616
		Wahoo	WAH	3617
		Seerfish NEI	KGX	3618
		Swordfish	SWO	3619
		Indo-Pacific sailfish	SFA	3620
		Black marlin	BLM	3621
		Indo-Pacific blue marlin	BLZ	3622
		Striped marlin	MLS	3623
		Other NEI	OTH	3624
				5.17
				1.29
				6.46
				Total

1 ANNUAL LANDING BY SPECIES - 1996

1.1 Catch and Fishing Effort by Type of Fishing Gear

1.1.4 Gill Net

(3) Indonesia

Unit: Tonnes

Unit of fishing effort	Sub-area		Total	Area 57	Area 71
	Species (group)	Code No.			
No. of fishing units					
No. of trips					
No. of days					
No. of hauls					
No. of hours					
Skipjack tuna	SKJ	3601	1,518	1,518	
Yellowfin tuna	YFT	3602	670	670	
Big-eye tuna	BET	3603			
Longtail tuna	LOT	3604			
Albacore	ALB	3605			
Eastern little tuna	KAW	3606			
Frigate and bullet tuna	FRZ	3607			
Indo-Pacific swordfish, sailfish and marlin	BIL	3608			
Narrow-barred king mackerel	COM	3609			
King mackerel	GUT	3610			
Streaked seerfish	STS	3611			
Frigate tuna	FRI	3612	2,402	2,402	
Bullet tuna	BLT	3613			
Southern bluefin tuna	SBF	3614			
Indo-Pacific bonito	BIP	3615			
Tunas and bonito NEI	TUN	3616			
Wahoo	WAH	3617			
Seerfish NEI	KGX	3618			
Swordfish	SWO	3619			
Indo-Pacific sailfish	SFA	3620			
Black marlin	BLM	3621			
Indo-Pacific blue marlin	BLZ	3622			
Striped marlin	MLS	3623			
Other NEI	OTH	3624			
TOTAL			4,590	4,590	0

**1 ANNUAL LANDING BY SPECIES - 1996**

1.1 Catch and Fishing Effort by Type of Fishing Gear

1.1.5 Hook and Line

(1) Malaysia

Unit: Tonnes

Unit of fishing effort	Sub-area		Total	West Coast of Peninsular	East Coast of Peninsular	Sabah	Sarawak	Labuan
	Species (group)	Code No.						
No. of fishing units			21,977	10,788	11,189	-	-	-
No. of trips			232,237	118,815	113,422	-	-	-
No. of days			287,310	118,156	169,154	-	-	-
No. of hauls			547,295	547,175	120	-	-	-
<b>TOTAL CATCH</b>			9,078	21	4,338	3,812	568	339
			Total	West Coast P	East Coast P	Sabah	Sarawak	Labuan
Skipjack tuna		SKJ		-	-	-	-	-
Yellowfin tuna		YFT		-	-	-	-	-
Big-eye tuna		BET		-	-	-	-	-
Longtail tuna		LOT		-	-	-	-	-
Albacore		ALB		-	-	-	-	-
Eastern little tuna		KAW		-	-	-	-	-
Frigate and bullet tuna		FRZ		-	-	-	-	-
Indo-Pacific swordfish, sailfish and marlin		BIL	45	-	27	18	-	0
Narrow-barred king mackerel		COM		-	-	-	-	-
King mackerel		GUT		-	-	-	-	-
Straked seerfish		STS		-	-	-	-	-
Frigate tuna		FRI		-	-	-	-	-
Bullet tuna		BLT		-	-	-	-	-
Southern bluefin tuna		SBF		-	-	-	-	-
Indo-Pacific bonito		BIP		-	-	-	-	-
Tunas and bonito NEI		TUN	5,924	-	3,164	2,344	416	0
Wahoo		WAH		-	-	-	-	-
Seerfish NEI		KGX	3,109	21	1,147	1,450	152	339
Swordfish		SWO		-	-	-	-	-
Indo-Pacific sailfish		SFA		-	-	-	-	-
Black marlin		BLM		-	-	-	-	-
Indo-Pacific blue marlin		BLZ		-	-	-	-	-
Striped marlin		MLS		-	-	-	-	-
Other NEI		OTH		-	-	-	-	-

**1 ANNUAL LANDING BY SPECIES - 1996**

1.1 Catch and Fishing Effort by Type of Fishing Gear  
 1.1.5 Hook and Line  
 (2) Brunei Darussalam

Unit: Tonnes

Unit of fishing effort		TOTAL CATCH		Total
No. of fishing units	No. of trips	Species (group)	CODES	Code No.
No. of days	No. of hauls			
				19.65
				Total
		Skipjack tuna	SKJ	3601
		Yellowfin tuna	YFT	3602
		Big-eye tuna	BET	3603
		Longtail tuna	LOT	3604
		Albacore	ALB	3605
		Eastern little tuna	KAW	3606
		Frigate and bullet tuna	FRZ	3607
		Indo-Pacific swordfish, sailfish and marlin	BIL	3608
		Narrow-barred king mackerel	COM	3609
		King mackerel	GUT	3610
		Streked seerfish	STS	3611
		Frigate tuna	FRI	3612
		Bullet tuna	BLT	3613
		Southern bluefin tuna	SBF	3614
		Indo-Pacific bonito	BIP	3615
		Tunas and bonito NEI	TUN	3616
		Wahoo	WAH	3617
		Seerfish NEI	KGX	3618
		Swordfish	SWO	3619
		Indo-Pacific sailfish	SFA	3620
		Black marlin	BLM	3621
		Indo-Pacific blue marlin	BLZ	3622
		Striped marlin	MLS	3623
		Other NEI	OTH	3624
				0.79
				0.20
				5.89
				9.82
				2.95

**1 ANNUAL LANDING BY SPECIES - 1996**

**1.1 Catch and Fishing Effort by Type of Fishing Gear**

**1.1.6 Ring Net**

(1) Brunei Darussalam

Unit: Tonnes

Unit of fishing effort		TOTAL CATCH		Total
No. of fishing units	No. of trips	No. of days	No. of hauls	
Species (group)				Total
		CODES	Code No.	
Skipjack tuna		SKJ	3601	
Yellowfin tuna		YFT	3602	
Big-eye tuna		BET	3603	
Longtail tuna		LOT	3604	4.98
Albacore		ALB	3605	
Eastern little tuna		KAW	3606	22.61
Frigate and bullet tuna		FRZ	3607	
Indo-Pacific swordfish, sailfish and marlin		BIL	3608	
Narrow-barred king mackerel		COM	3609	
King mackerel		GUT	3610	
Streked seerfish		STS	3611	
Frigate tuna		FRI	3612	5.12
Bullet tuna		BLT	3613	
Southern bluefin tuna		SBF	3614	
Indo-Pacific bonito		BIP	3615	
Tunas and bonito NEI		TUN	3616	
Wahoo		WAH	3617	
Seerfish NEI		KGX	3618	
Swordfish		SWO	3619	
Indo-Pacific sailfish		SFA	3620	
Black marlin		BLM	3621	
Indo-Pacific blue marlin		BLZ	3622	
Striped marlin		MLS	3623	
Other NEI		OTH	3624	
<b>TOTAL CATCH</b>				<b>32.71</b>

**1 ANNUAL LANDING BY SPECIES - 1996**

1.1 Catch and Fishing Effort by Type of Fishing Gear  
 1.1.7 Offshore Longline  
 (1) Indonesia

Unit: Tonnes

Unit of fishing effort	Sub-area		Total	Area 57	Area 71
	Species (group)	CODES			
No. of fishing units					
No. of trips					
No. of days					
No. of hauls					
No. of hours					
No. of hooks					
Skipjack tuna		SKJ	3601		
Yellowfin tuna		YFT	3602		
Big-eye tuna		BET	3603	4,542	5,670
Longtail tuna		LOT	3604	1,604	781
Albacore		ALB	3605		
Eastern little tuna		KAW	3606	487	
Frigate and bullet tuna		FRZ	3607		
Indo-Pacific swordfish, sailfish and marlin		BIL	3608		
Narrow-barred king mackerel		COM	3609		
King mackerel		GUT	3610		
Striked seerfish		STS	3611		
Frigate tuna		FRI	3612		
Bullet tuna		BLT	3613		
Southern bluefin tuna		SBF	3614		
Indo-Pacific bonito		BIP	3615		
Tunas and bonito NEI		TUN	3616		
Wahoo		WAH	3617		
Seerfish NEI		KGX	3618		
Swordfish		SWO	3619		
Indo-Pacific sailfish		SFA	3620		
Black marlin		BLM	3621		
Indo-Pacific blue marlin		BLZ	3622		
Striped marlin		MLS	3623		
Other NEI		OTH	3624		
<b>TOTAL</b>			<b>13,084</b>	<b>6,633</b>	<b>6,451</b>



1 ANNUAL LANDING BY SPECIES - 1996

1.1 Catch and Fishing Effort by Type of Fishing Gear

1.1.8 Distant-Water Longline

(1) Indonesia

Unit: Tonnes

Unit of fishing effort		Sub-area	Total	Area 57	Area 71
Species (group)		CODES	Code No.	Area 57	Area 71
No. of fishing units					
No. of trips					
No. of days					
No. of hauls					
No. of hours					
No. of hooks					
Skipjack tuna		SKJ	3601		
Yellowfin tuna		YFT	3602	4,848	
Big-eye tuna		BET	3603	968	
Longtail tuna		LOT	3604		
Albacore		ALB	3605	350	
Eastern little tuna		KAW	3606		
Frigate and bullet tuna		FRZ	3607		
Indo-Pacific swordfish, sailfish and marlin		BIL	3608		
Narrow-barred king mackerel		COM	3609		
King mackerel		GUT	3610		
Straked seerfish		STS	3611		
Frigate tuna		FRI	3612		
Bullet tuna		BLT	3613		
Southern bluefin tuna		SBF	3614		
Indo-Pacific bonito		BIP	3615		
Tunas and bonito NEI		TUN	3616		
Wahoo		WAH	3617		
Seerfish NEI		KGX	3618		
Swordfish		SWO	3619		
Indo-Pacific sailfish		SFA	3620		
Black marlin		BLM	3621		
Indo-Pacific blue marlin		BLZ	3622		
Striped marlin		MLS	3623		
Other NEI		OTH	3624		
<b>TOTAL</b>			<b>6,166</b>	<b>6,166</b>	

1 ANNUAL LANDING BY SPECIES - 1996

1.1 Catch and Fishing Effort by Type of Fishing Gear

1.1.9 Coastal Pole and Line

(1) Indonesia

Unit: Tonnes

Unit of fishing effort	Sub-area		Total	Area 57	Area 71
	Species (group)	Code No.			
No. of fishing units					
No. of trips					
No. of days					
No. of hauls					
No. of hours					
Skipjack tuna	SKJ	3601	68,316		68,316
Yellowfin tuna	YFT	3602	6,188		6,188
Big-eye tuna	BET	3603			
Longtail tuna	LOT	3604			
Albacore	ALB	3605			
Eastern little tuna	KAW	3606			
Frigate and bullet tuna	FRZ	3607			
Indo-Pacific swordfish, sailfish and marlin	BIL	3608			
Narrow-barred king mackerel	COM	3609			
King mackerel	GUT	3610			
Streked seerfish	STS	3611			
Frigate tuna	FRI	3612	1,975		1,975
Bullet tuna	BLT	3613			
Southern bluefin tuna	SBF	3614			
Indo-Pacific bonito	BIP	3615			
Tunas and bonito NEI	TUN	3616			
Wahoo	WAH	3617			
Seerfish NEI	KGX	3618			
Swordfish	SWO	3619			
Indo-Pacific sailfish	SFA	3620			
Black marlin	BLM	3621			
Indo-Pacific blue marlin	BLZ	3622			
Striped marlin	MLS	3623			
Other NEI	OTH	3624			
TOTAL			76,479	0	76,479

**1 ANNUAL LANDING BY SPECIES - 1996**

1.1 Catch and Fishing Effort by Type of Fishing Gear

1.1.10 Offshore Pole and Line

(1) Indonesia

Unit: Tonnes

Unit of fishing effort	Sub-area		Total	Area 57	Area 71
	Species (group)	CODES			
No. of fishing units					
No. of trips					
No. of days					
No. of hauls					
No. of hours					
Skipjack tuna		SKJ	3601		8,174
Yellowfin tuna		YFT	3602		2,610
Big-eye tuna		BET	3603		
Longtail tuna		LOT	3604		
Albacore		ALB	3605		
Eastern little tuna		KAW	3606		
Frigate and bullet tuna		FRZ	3607		
Indo-Pacific swordfish, sailfish and marlin		BIL	3608		
Narrow-barred king mackerel		COM	3609		
King mackerel		GUT	3610		
Streked seerfish		STS	3611		
Frigate tuna		FRI	3612		1,471
Bullet tuna		BLT	3613		
Southern bluefin tuna		SBF	3614		
Indo-Pacific bonito		BIP	3615		
Tunas and bonito NEI		TUN	3616		
Wahoo		WAH	3617		
Seerfish NEI		KGX	3618		
Swordfish		SWO	3619		
Indo-Pacific sailfish		SFA	3620		
Black marlin		BLM	3621		
Indo-Pacific blue marlin		BLZ	3622		
Striped marlin		MLS	3623		
Other NEI		OTH	3624		
<b>TOTAL</b>			<b>12,255</b>	<b>0</b>	<b>12,255</b>

1 ANNUAL LANDING BY SPECIES - 1996

1.1 Catch and Fishing Effort by Type of Fishing Gear

1.1.11 Small Purse Seine

(1) Indonesia

Unit: Tonnes

Unit of fishing effort	Sub-area		Total	Area 57	Area 71
	Species (group)	Code No.			
No. of fishing units					
No. of trips					
No. of days					
No. of hauls					
No. of hours					
Skipjack tuna	SKJ	3601	10,421	2,600	7,821
Yellowfin tuna	YFT	3602	2,115	546	1,569
Big-eye tuna	BET	3603			
Longtail tuna	LOT	3604			
Albacore	ALB	3605			
Eastern little tuna	KAW	3606			
Frigate and bullet tuna	FRZ	3607			
Indo-Pacific swordfish, sailfish and marlin	BIL	3608			
Narrow-barred king mackerel	COM	3609			
King mackerel	GUT	3610			
Straked seerfish	STS	3611			
Frigate tuna	FRI	3612	7,048	2,270	4,778
Bullet tuna	BLT	3613			
Southern bluefin tuna	SBF	3614			
Indo-Pacific bonito	BIP	3615			
Tunas and bonito NEI	TUN	3616			
Wahoo	WAH	3617			
Seerfish NEI	KGX	3618			
Swordfish	SWO	3619			
Indo-Pacific sailfish	SFA	3620			
Black marlin	BLM	3621			
Indo-Pacific blue marlin	BLZ	3622			
Striped marlin	MLS	3623			
Other NEI	OTH	3624			
TOTAL			19,584	5,416	14,168

1 ANNUAL LANDING BY SPECIES - 1996  
 1.1 Catch and Fishing Effort by Type of Fishing Gear  
 1.1.12 Large Purse Seine  
 (1) Indonesia

Unit: Tonnes

Unit of fishing effort	Sub-area		Total	Area 57	Area 71
	Species (group)	CODES			
No. of fishing units					
No. of trips					
No. of days					
No. of hauls					
No. of hours					
Skipjack tuna		SKJ	3601		5,014
Yellowfin tuna		YFT	3602		4,860
Big-eye tuna		BET	3603		
Longtail tuna		LOT	3604		
Albacore		ALB	3605		
Eastern little tuna		KAW	3606		
Frigate and bullet tuna		FRZ	3607		
Indo-Pacific swordfish, sailfish and marlin		BIL	3608		
Narrow-barred king mackerel		COM	3609		
King mackerel		GUT	3610		
Streked seerfish		STS	3611		
Frigate tuna		FRI	3612		
Bullet tuna		BLT	3613		
Southern bluefin tuna		SBF	3614		
Indo-Pacific bonito		BIP	3615		
Tunas and bonito NEI		TUN	3616		
Wahoo		WAH	3617		
Seerfish NEI		KGX	3618		
Swordfish		SWO	3619		
Indo-Pacific sailfish		SFA	3620		
Black marlin		BLM	3621		
Indo-Pacific blue marlin		BLZ	3622		
Striped marlin		MLS	3623		
Other NEI		OTH	3624		
<b>TOTAL</b>			<b>9,874</b>		<b>9,874</b>

1 ANNUAL LANDING BY SPECIES - 1996  
 1.1 Catch and Fishing Effort by Type of Fishing Gear  
 1.1.13 Seine Net  
 (1) Indonesia

Unit: Tonnes

Unit of fishing effort		Sub-area	Total	Area 57	Area 71
No. of fishing units					
No. of trips					
No. of days					
No. of hauls					
No. of hours					
	Species (group)	CODES	Code No.	Area 57	Area 71
	Skipjack tuna	SKJ	3601		
	Yellowfin tuna	YFT	3602	1,771	
	Big-eye tuna	BET	3603	485	
	Longtail tuna	LOT	3604		
	Albacore	ALB	3605		
	Eastern little tuna	KAW	3606		
	Frigate and bullet tuna	FRZ	3607		
	Indo-Pacific swordfish, sailfish and marlin	BIL	3608		
	Narrow-barrred king mackerel	COM	3609		
	King mackerel	GUT	3610		
	Streked seerfish	STS	3611		
	Frigate tuna	FRI	3612	3,013	
	Bullet tuna	BLT	3613		
	Southern bluefin tuna	SBF	3614		
	Indo-Pacific bonito	BIP	3615		
	Tunas and bonito NEI	TUN	3616		
	Wahoo	WAH	3617		
	Seerfish NEI	KGX	3618		
	Swordfish	SWO	3619		
	Indo-Pacific sailfish	SFA	3620		
	Black marlin	BLM	3621		
	Indo-Pacific blue marlin	BLZ	3622		
	Striped marlin	MILS	3623		
	Other NEI	OTH	3624		
	TOTAL		5,269	5,269	

**1 ANNUAL LANDING BY SPECIES - 1996**

**1.1 Catch and Fishing Effort by Type of Fishing Gear**

**1.1.14 Hand Line**

**(1) Indonesia**

Unit: Tonnes

Unit of fishing effort	Sub-area		Total	Area 57	Area 71
	Species (group)	CODES			
No. of fishing units					
No. of trips					
No. of days					
No. of hauls					
No. of hours					
Skipjack tuna		SKJ	3601		
Yellowfin tuna		YFT	3602		3,192
Big-eye tuna		BET	3603		5,913
Longtail tuna		LOT	3604		
Albacore		ALB	3605		
Eastern little tuna		KAW	3606		
Frigate and bullet tuna		FRZ	3607		
Indo-Pacific swordfish, sailfish and marlin		BIL	3608		
Narrow-banded king mackerel		COM	3609		
King mackerel		GUT	3610		
Straked seerfish		STS	3611		
Frigate tuna		FRI	3612		
Bullet tuna		BLT	3613		
Southern bluefin tuna		SBF	3614		
Indo-Pacific bonito		BIP	3615		
Tunas and bonito NEI		TUN	3616		
Wahoo		WAH	3617		
Seerfish NEI		KGX	3618		
Swordfish		SWO	3619		
Indo-Pacific sailfish		SFA	3620		
Black marlin		BLM	3621		
Indo-Pacific blue marlin		BLZ	3622		
Striped marlin		MLS	3623		
Other NEI		OTH	3624		
<b>TOTAL</b>			<b>9,716</b>		<b>9,716</b>

1 ANNUAL LANDING BY SPECIES - 1996

1.1 Catch and Fishing Effort by Type of Fishing Gear

1.1.15 Troll Line

(1) Indonesia

Unit: Tonnes

Unit of fishing effort	Sub-area		Total	Area 57	Area 71
	Species (group)	CODES			
No. of fishing units					
No. of trips					
No. of days					
No. of hauls					
No. of hours					
			Total	Area 57	Area 71
Skipjack tuna		SKJ	3601		
Yellowfin tuna		YFT	3602	719	
Big-eye tuna		BET	3603	710	
Longtail tuna		LOT	3604		
Albacore		ALB	3605		
Eastern little tuna		KAW	3606		
Frigate and bullet tuna		FRZ	3607		
Indo-Pacific swordfish, sailfish and marlin		BIL	3608		
Narrow-banded king mackerel		COM	3609		
King mackerel		GUT	3610		
Striked seerfish		STS	3611		
Frigate tuna		FRI	3612		
Bullet tuna		BLT	3613		
Southern bluefin tuna		SBF	3614		
Indo-Pacific bonito		BIP	3615		
Tunas and bonito NEI		TUN	3616		
Wahoo		WAH	3617		
Seerfish NEI		KGX	3618		
Swordfish		SWO	3619		
Indo-Pacific sailfish		SFA	3620		
Black marlin		BLM	3621		
Indo-Pacific blue marlin		BLZ	3622		
Striped marlin		MLS	3623		
Other NEI		OTH	3624		
TOTAL			1,429	1,429	



1 ANNUAL LANDING BY SPECIES - 1996

1.1 Catch and Fishing Effort by Type of Fishing Gear

1.1.16 Unclassified

(1) Indonesia

Unit: Tonnes

Unit of fishing effort	Sub-area		Total	Area 57	Area 71
	Species (group)	CODES			
No. of fishing units					
No. of trips					
No. of days					
No. of hauls					
No. of hours					
Skipjack tuna		SKJ	3601		
Yellowfin tuna		YFT	3602	20,544	26,461
Big-eye tuna		BET	3603	879	30,459
Longtail tuna		LOT	3604		
Albacore		ALB	3605		
Eastern little tuna		KAW	3606		
Frigate and bullet tuna		FRZ	3607		
Indo-Pacific swordfish, sailfish and marlin		BIL	3608		
Narrow-barred king mackerel		COM	3609		
King mackerel		GUT	3610		
Streked seerfish		STS	3611		
Frigate tuna		FRI	3612	48,334	57,386
Bullet tuna		BLT	3613		
Southern bluefin tuna		SBF	3614		
Indo-Pacific bonito		BIP	3615		
Tunas and bonito NEI		TUN	3616		
Wahoo		WAH	3617		
Seerfish NEI		KGX	3618		
Swordfish		SWO	3619		
Indo-Pacific sailfish		SFA	3620		
Black marlin		BLM	3621		
Indo-Pacific blue marlin		BLZ	3622		
Striped marlin		MLS	3623		
Other NEI		OTH	3624		
TOTAL			184,063	69,757	114,306

# 1 ANNUAL LANDING BY SPECIES - 1996

## 1.2 Catch and Fishing Effort by Type of Fishing Gear and Size of Management

### 1.2.1 Fish Purse Seine

(1) Malaysia

Size of Boat: Less than 10 tons

Unit of fishing effort	Sub-area		Total	West Coast of Peninsular	East Coast of Peninsular
	CODES	Code No.			
No. of units			5		5
No. of trips			50		50
No. of days			50		50
No. of hauls			1,000		1,000
TOTAL CATCH					
	Species (group)	CODES	Code No.	West Coast P	East Coast P
	Skipjack tuna	SKJ	3601		
	Yellowfin tuna	YFT	3602		
	Big-eye tuna	BET	3603		
	Longtail tuna	LOT	3604		
	Albacore	ALB	3605		
	Eastern little tuna	KAW	3606		
	Frigate and bullet tuna	FRZ	3607		
	Indo-Pacific swordfish, sailfish and marlin	BIL	3608		
	Narrow-barré king mackerel	COM	3609		
	King mackerel	GUT	3610		
	Straked seerfish	STS	3611		
	Frigate tuna	FRI	3612		
	Bullet tuna	BLT	3613		
	Southern bluefin tuna	SBF	3614		
	Indo-Pacific bonito	BIP	3615		
	Tunas and bonito NEI	TUN	3616		6
	Wahoo	WAH	3617		
	Seerfish NEI	KGX	3618		
	Swordfish	SWO	3619		
	Indo-Pacific sailfish	SFA	3620		
	Black marlin	BLM	3621		
	Indo-Pacific blue marlin	BLZ	3622		
	Striped marlin	MLS	3623		
	Other NEI	OTH	3624		

1 ANNUAL LANDING BY SPECIES - 1996

1.2 Catch and Fishing Effort by Type of Fishing Gear and Size of Management

1.2.1 Fish Purse Seine

(1) Malaysia

Size of Boat: 10-25 tons

Unit of fishing effort	Sub-area	Total	West Coast of Peninsular	East Coast of Peninsular	TOTAL CATCH	
					Species (group)	Code No.
No. of units		1,235	53	1,182		
No. of trips		17,649	982	16,667		
No. of days		18,411	982	17,429		
No. of hauls		56,349	5,782	50,567		
		1,126	0	1,126		
Skipjack tuna					SKJ	3601
Yellowfin tuna					YFT	3602
Big-eye tuna					BET	3603
Longtail tuna					LOT	3604
Albacore					ALB	3605
Eastern little tuna					KAW	3606
Frigate and bullet tuna					FRZ	3607
Indo-Pacific swordfish, sailfish and marlin		4		4	BIL	3608
Narrow-barred king mackerel					COM	3609
King mackerel					GUT	3610
Streked seerfish					STS	3611
Frigate tuna					FRI	3612
Bullet tuna					BLT	3613
Southern bluefin tuna					SBF	3614
Indo-Pacific bonito					BIP	3615
Tunas and bonito NEI		1,086		1,086	TUN	3616
Wahoo					WAH	3617
Seerfish NEI					KGX	3618
Swordfish		36		36	SWO	3619
Indo-Pacific sailfish					SFA	3620
Black marlin					BLM	3621
Indo-Pacific blue marlin					BLZ	3622
Striped marlin					MLS	3623
Other NEI					OTH	3624

1 ANNUAL LANDING BY SPECIES - 1996

1.2 Catch and Fishing Effort by Type of Fishing Gear and Size of Management

1.2.1 Fish Purse Seine

(1) Malaysia

Size of Boat: 25-40 tons

Unit of fishing effort	Sub-area	Total	West Coast of Peninsular	East Coast of Peninsular
No. of units		1,113	576	537
No. of trips		14,440	8,786	5,654
No. of days		16,669	8,786	7,883
No. of hauls		40,323	21,107	19,216
		1,413	459	954
TOTAL CATCH				
Species (group)	CODES	Code No.	West Coast P	East Coast P
Skipjack tuna	SKJ	3601		
Yellowfin tuna	YFT	3602		
Big-eye tuna	BET	3603		
Longtail tuna	LOT	3604		
Albacore	ALB	3605		
Eastern little tuna	KAW	3606		
Frigate and bullet tuna	FRZ	3607		
Indo-Pacific swordfish, sailfish and marlin	BIL	3608		1
Narrow-barred king mackerel	COM	3609		
King mackerel	GUT	3610		
Streked seerfish	STS	3611		
Frigate tuna	FRI	3612		
Bullet tuna	BLT	3613		
Southern bluefin tuna	SBF	3614		
Indo-Pacific bonito	BIP	3615		
Tunas and bonito NEI	TUN	3616	458	919
Wahoo	WAH	3617		
Seerfish NEI	KGX	3618	1	34
Swordfish	SWO	3619		
Indo-Pacific sailfish	SFA	3620		
Black marlin	BLM	3621		
Indo-Pacific blue marlin	BLZ	3622		
Striped marlin	MLS	3623		
Other NEI	OTH	3624		
		1,377	458	919
		35	1	34

1 ANNUAL LANDING BY SPECIES - 1996

1.2 Catch and Fishing Effort by Type of Fishing Gear and Size of Management

1.2.1 Fish Purse Seine

(1) Malaysia

Size of Boat: 40- 70 tons

Unit of fishing effort	Sub-area	Total	West Coast of Peninsular	East Coast of Peninsular
No. of units		2,156	1,316	840
No. of trips		24,991	16,826	8,165
No. of days		34,833	22,862	11,971
No. of hauls		76,735	42,546	34,189
TOTAL CATCH				
Species (group)	CODES	Code No.	West Coast P	East Coast P
Skipjack tuna	SKJ	3601		
Yellowfin tuna	YFT	3602		
Big-eye tuna	BET	3603		
Longtail tuna	LOT	3604		
Albacore	ALB	3605		
Eastern little tuna	KAW	3606		
Frigate and bullet tuna	FRZ	3607		
Indo-Pacific swordfish, sailfish and marlin	BIL	3608		
Narrow-barred king mackerel	COM	3609		
King mackerel	GUT	3610		
Streked seerfish	STS	3611		
Frigate tuna	FRI	3612		
Bullet tuna	BLT	3613		
Southern bluefin tuna	SBF	3614		
Indo-Pacific bonito	BIP	3615		
Tunas and bonito NEI	TUN	3616		1,947
Wahoo	WAH	3617		
Seerfish NEI	KGX	3618	4,059	
Swordfish	SWO	3619	70	58
Indo-Pacific sailfish	SFA	3620		
Black marlin	BLM	3621		
Indo-Pacific blue marlin	BLZ	3622		
Striped marlin	MILS	3623		
Other NEI	OTH	3624		
		Total	6,006	128
		Total	4,129	2,005

# 1 ANNUAL LANDING BY SPECIES - 1996

## 1.2 Catch and Fishing Effort by Type of Fishing Gear and Size of Management

### 1.2.1 Fish Purse Seine

(1) Malaysia

Size of Boat: More than 70 tons  
Catch unit in Tonnes

Unit of fishing effort	Sub-area	Total	West Coast of Peninsular	East Coast of Peninsular
No. of units		1,002	321	681
No. of trips		3,037	1,180	1,857
No. of days		17,171	6,075	11,096
No. of hauls		27,500	4,520	22,980
TOTAL CATCH				
	Species (group)	Code No.		
	Skipjack tuna	SKJ		
	Yellowfin tuna	YFT		
	Big-eye tuna	BET		
	Longtail tuna	LOT		
	Albacore	ALB		
	Eastern little tuna	KAW		
	Frigate and bullet tuna	FRZ		
	Indo-Pacific swordfish, sailfish and marlin	BIL		
	Narrow-barred king mackerel	COM		
	King mackerel	GUT		
	Streked seerfish	STS		
	Frigate tuna	FRI		
	Bullet tuna	BLT		
	Southern bluefin tuna	SBF		
	Indo-Pacific bonito	BIP		
	Tunas and bonito NEI	TUN		
	Wahoo	WAH		
	Seerfish NEI	KGX		
	Swordfish	SWO		
	Indo-Pacific sailfish	SFA		
	Black marlin	BLM		
	Indo-Pacific blue marlin	BLZ		
	Striped marlin	MLS		
	Other NEI	OTH		
			1112	572
			48	1
			1684	
			49	
			1,160	573
			West Coast	East Coast

1 ANNUAL LANDING BY SPECIES - 1996

1.2 Catch and Fishing Effort by Type of Fishing Gear and Size of Management

1.2.1 Purse Seine  
(2) Japan

Unit of fishing effort	Size of Management		Catch unit in Tonnes
	50-200 GRT	200-500 GRT	
No. of fishing units			
No. of trips			
No. of days			
No. of hauls			
No. of hooks			
TOTAL CATCH			
Species (group)	Code No.	Total	500
Skipjack tuna	SKJ	482	482
Yellowfin tuna	YFT	18	18
Big-eye tuna	BET		
Longtail tuna	LOT		
Albacore	ALB		
Eastern little tuna (kawakawa)	KAW		
Frigate and bullet tuna	FRZ		
Indo-Pacific swordfish, sailfish and marlin	BIL		
Narrow-barred king mackerel	COM		
King mackerel	GUT		
Streked seerfish	STS		
Frigate tuna	FRI		
Bullet tuna	BLT		
Southern bluefin tuna	SBF		
Indo-Pacific bonito	BIP		
Tunas and bonito NEI	TUN		
Wahoo	WAH		
Seerfish NEI	KGX		
Swordfish	SWO		
Indo-Pacific sailfish	SFA		
Black marlin	BLM		
Indo-Pacific blue marlin	BLZ		
Striped marlin	MLS		
Other NEI	OTH		

**1 ANNUAL LANDING BY SPECIES - 1996**

**1.2 Catch and Fishing Effort by Type of Fishing Gear and Size of Management**

**1.2.2 Trawl Net**

(1) Malaysia

**Size of Boat: Less than 10 tons**  
Catch unit in Tonnes

Unit of fishing effort	Sub-area	Total	West Coast of Peninsular	East Coast of Peninsular
No. of units		11,137	8,539	2,598
No. of trips		176,205	139,393	36,812
No. of days		177,046	139,449	37,597
No. of hauls		453,489	337,458	116,031
<b>TOTAL CATCH</b>				
Species (group)	CODES	Code No.	West Coast P	East Coast P
Skipjack tuna	SKJ	3601		
Yellowfin tuna	YFT	3602		
Big-eye tuna	BET	3603		
Longtail tuna	LOT	3604		
Albacore	ALB	3605		
Eastern little tuna	KAW	3606		
Frigate and bullet tuna	FRZ	3607		
Indo-Pacific swordfish, sailfish and marlin	BIL	3608		
Narrow-barred king mackerel	COM	3609		
King mackerel	GUT	3610		
Striked seerfish	STS	3611		
Frigate tuna	FRI	3612		
Bullet tuna	BLT	3613		
Southern bluefin tuna	SBF	3614		
Indo-Pacific bonito	BIP	3615		
Tunas and bonito NEI	TUN	3616		
Wahoo	WAH	3617		
Seerfish NEI	KGX	3618		9
Swordfish	SWO	3619		
Indo-Pacific sailfish	SFA	3620		
Black marlin	BLM	3621		
Indo-Pacific blue marlin	BLZ	3622		
Striped marlin	MLS	3623		
Other NEI	OTH	3624		
		Total	West Coast P	East Coast P
		9		9



1 ANNUAL LANDING BY SPECIES - 1996

1.2 Catch and Fishing Effort by Type of Fishing Gear and Size of Management

1.2.2 Trawl Net

(1) Malaysia

Size of Boat: 10-25 tons  
Catch unit in Tonnes

Unit of fishing effort	Sub-area		Total	West Coast of Peninsular	East Coast of Peninsular
No. of units			29,899	25,025	4,874
No. of trips			508,130	444,648	63,482
No. of days			536,483	457,802	78,681
No. of hauls			1,575,292	1,262,354	312,938
TOTAL CATCH			397	362	35
Species (group)	CODES	Code No.	Total	West Coast P	East Coast P
Skipjack tuna	SKJ	3601			
Yellowfin tuna	YFT	3602			
Big-eye tuna	BET	3603			
Longtail tuna	LOT	3604			
Albacore	ALB	3605			
Eastern little tuna	KAW	3606			
Frigate and bullet tuna	FRZ	3607			
Indo-Pacific swordfish, sailfish and marlin	BIL	3608			
Narrow-barred king mackerel	COM	3609			
King mackerel	GUT	3610			
Streked seerfish	STS	3611			
Frigate tuna	FRI	3612			
Bullet tuna	BLT	3613			
Southern bluefin tuna	SBF	3614			
Indo-Pacific bonito	BIP	3615			
Tunas and bonito NEI	TUN	3616	1	1	
Wahoo	WAH	3617			
Seerfish NEI	KGX	3618			
Swordfish	SWO	3619			
Indo-Pacific sailfish	SFA	3620			
Black marlin	BLM	3621			
Indo-Pacific blue marlin	BLZ	3622			
Striped marlin	MLS	3623			
Other NEI	OTH	3624			
			396	361	35

1 ANNUAL LANDING BY SPECIES - 1996

1.2 Catch and Fishing Effort by Type of Fishing Gear and Size of Management

1.2.2 Trawl Net

(1) Malaysia

Unit of fishing effort	Sub-area	Total	Size of Boat: 25-40 tons Catch unit in Tonnes	
			West Coast of Peninsular	East Coast of Peninsular
No. of units				
No. of trips		10,858	8,151	2,707
No. of days		113,612	102,361	11,251
No. of hauls		202,486	154,498	47,988
		713,639	527,078	186,561
TOTAL CATCH				
		935	735	200
Species (group)	CODES	Total	West Coast P	East Coast P
Skipjack tuna	SKJ			
Yellowfin tuna	YFT			
Big-eye tuna	BET			
Longtail tuna	LOT			
Albacore	ALB			
Eastern little tuna	KAW			
Frigate and bullet tuna	FRZ			
Indo-Pacific swordfish, sailfish and marlin	BIL			
Narrow-barred king mackerel	COM			
King mackerel	GUT			
Straked seerfish	STS			
Frigate tuna	FRI			
Bullet tuna	BLT			
Southern bluefin tuna	SBF			
Indo-Pacific bonito	BIP			
Tunas and bonito NEI	TUN	43	41	2
Wahoo	WAH			
Seerfish NEI	KGX		694	198
Swordfish	SWO	892		
Indo-Pacific sailfish	SFA			
Black marlin	BLM			
Indo-Pacific blue marlin	BLZ			
Striped marlin	MLS			
Other NEI	OTH			

1 ANNUAL LANDING BY SPECIES - 1996

1.2 Catch and Fishing Effort by Type of Fishing Gear and Size of Management

1.2.2 Trawl Net

(1) Malaysia

Size of Boat: 40-70 tons  
Catch unit in Tonnes

Unit of fishing effort	Sub-area	Total	West Coast of Peninsular	East Coast of Peninsular	TOTAL CATCH	
					Species (group)	Code No.
No. of units		7,990	5,759	2,231		
No. of trips		43,075	36,888	6,187		
No. of days		156,057	116,163	39,894		
No. of hauls		613,412	467,870	145,542		
		1,260	994	266		
		Total	West Coast P	East Coast P		
Skipjack tuna					3601	
Yellowfin tuna					3602	
Big-eye tuna					3603	
Longtail tuna					3604	
Albacore					3605	
Eastern little tuna					3606	
Frigate and bullet tuna					3607	
Indo-Pacific swordfish, sailfish and marlin					3608	
Narrow-barred king mackerel					3609	
King mackerel					3610	
Streked seerfish					3611	
Frigate tuna					3612	
Bullet tuna					3613	
Southern bluefin tuna					3614	
Indo-Pacific bonito					3615	
Tunas and bonito NEI		125	121	4	3616	
Wahoo					3617	
Seerfish NEI					3618	
Swordfish		1,135	873	262	3619	
Indo-Pacific sailfish					3620	
Black marlin					3621	
Indo-Pacific blue marlin					3622	
Striped marlin					3623	
Other NEI					3624	

1 ANNUAL LANDING BY SPECIES - 1996

1.2 Catch and Fishing Effort by Type of Fishing Gear and Size of Management

1.2.2 Trawl Net

(1) Malaysia

Size of Boat: More than 70 tons  
Catch unit in Tonnes

Unit of fishing effort	Sub-area	Total	West Coast of Peninsular	East Coast of Peninsular
No. of units		2,453	911	1,542
No. of trips		5,942	2,694	3,248
No. of days		45,827	18,656	27,171
No. of hauls		144,710	58,939	85,771
<b>TOTAL CATCH</b>				
Species (group)	CODES	Code No.	West Coast P	East Coast P
Skipjack tuna	SKJ	3601		
Yellowfin tuna	YFT	3602		
Big-eye tuna	BET	3603		
Longtail tuna	LOT	3604		
Albacore	ALB	3605		
Eastern little tuna	KAW	3606		
Frigate and bullet tuna	FRZ	3607		
Indo-Pacific swordfish, sailfish and marlin	BIL	3608		
Narrow-barred king mackerel	COM	3609		
King mackerel	GUT	3610		
Streaked seerfish	STS	3611		
Frigate tuna	FRI	3612		
Bullet tuna	BLT	3613		
Southern bluefin tuna	SBF	3614		
Indo-Pacific bonito	BIP	3615		
Tunas and bonito NEI	TUN	3616	30	7
Wahoo	WAH	3617		
Seerfish NEI	KGX	3618		
Swordfish	SWO	3619	138	148
Indo-Pacific sailfish	SFA	3620		
Black marlin	BLM	3621		
Indo-Pacific blue marlin	BLZ	3622		
Striped marlin	MLS	3623		
Other NEI	OTH	3624		
		Total	Total	Total
		37	286	155

1 ANNUAL LANDING BY SPECIES - 1998

1.2 Catch and Fishing Effort by Type of Fishing Gear and Size of Management

1.2.3 Gill Net

(1) Indonesia

Unit in Tonnes  
GT = GRT

No. of fishing effort	Size of boat		Total	<5 GT	10-15 GT	15-25 GT	<25 GT	30-50 GT	<30 GT	50 GT	60-100 GT
	Codes	Code No									
No. of fishing units	TOTAL CATCH		4,590	4,590							
No. of trips											
No. of days											
No. of hauls											
No. of hours											
Species (group)			Total	<5 GT	10-15 GT	15-25 GT	<25 GT	30-50 GT	<30 GT	50 GT	60-100 GT
Skipjack tuna	SKJ	3601	1,518	1,518							
Yellowfin tuna	YFT	3602	670	670							
Big-eye tuna	BET	3603									
Longtail tuna	LOT	3604									
Albacore	ALB	3605									
Eastern little tuna	KAW	3606									
Frigate and bullet tuna	FRZ	3607									
Indo-Pacific swordfish, sailfish and marlin	BIL	3608									
Narrow-barred king mackerel	COM	3609									
King mackerel	GUT	3610									
Streked seerfish	STS	3611									
Frigate tuna	FRI	3612	2,402	2,402							
Bullet tuna	BLT	3613									
Southern bluefin tuna	SBF	3614									
Indo-Pacific bonito	BIP	3615									
Tunas and bonito NEI	TUN	3616									
Wahoo	WAH	3617									
Seerfish NEI	KGX	3618									
Swordfish	SWO	3619									
Indo-Pacific sailfish	SFA	3620									
Black marlin	BLM	3621									
Indo-Pacific blue marlin	BLZ	3622									
Striped marlin	MLS	3623									
Other NEI	OTH	3624									

1 ANNUAL LANDING BY SPECIES - 1996

1.2 Catch and Fishing Effort by Type of Fishing Gear and Size of Management

1.2.4 Longline

(1) Japan

Catch unit in Tonnes

Unit of fishing effort	Size of Management					200-500 GRT
	20-50 GRT	50-100 GRT	100-200 GRT	50-100 GRT	100-200 GRT	
No. of fishing units						
No. of trips						
No. of days						
No. of hauls						
No. of hours						
No. of hooks						
<b>TOTAL CATCH</b>						
Species (group)	CODES	Code No.	Total	20-50 GRT	50-100 GRT	100-200 GRT
Skipjack tuna	SKJ	3601				
Yellowfin tuna	YFT	3602				
Big-eye tuna	BET	3603	26	5	4	17
Longtail tuna	LOT	3604	44		7	37
Albacore	ALB	3605	24	6	6	12
Eastern little tuna (kawakawa)	KAW	3606				
Frigate and bullet tuna	FRZ	3607				
Indo-Pacific swordfish, sailfish and marlin	BIL	3608				
Narrow-barred king mackerel	COM	3609				
King mackerel	GUT	3610				
Streked seerfish	STS	3611				
Frigate tuna	FRI	3612				
Bullet tuna	BLT	3613				
Southern bluefin tuna	SBF	3614				
Indo-Pacific bonito	BIP	3615				
Tunas and bonito NEI	TUN	3616				
Wahoo	WAH	3617				
Seerfish NEI	KGX	3618				
Swordfish	SWO	3619	15		1	14
Indo-Pacific sailfish	SFA	3620				
Black marlin	BLM	3621				
Indo-Pacific blue marlin	BLZ	3622	4	1	2	1
Striped marlin	MLS	3623	1			1
Other NEI	OTH	3624				







1 ANNUAL LANDING BY SPECIES - 1996

1.2 Catch and Fishing Effort by Type of Fishing Gear and Size of Management

1.2.7 Pole and Line

(1) Japan

Catch unit in Tonnes

Unit of fishing effort	Size of Management		Code No.	CODES	Species (group)	TOTAL CATCH		
	50-200 GRT	200-500 GRT				50-200 GRT	200-500 GRT	
No. of fishing units								
No. of trips								
No. of days								
No. of hauls								
No. of hours								
No. of hooks	1,654	3,580						
	5,234	Total						
			3601	SKJ	Skipjack tuna Yellowfin tuna Big-eye tuna Longtail tuna Albacore Eastern little tuna (kawakawa) Frigate and bullet tuna Indo-Pacific swordfish, sailfish and marlin Narrow-barred king mackerel King mackerel Streked seerfish Frigate tuna Bullet tuna Southern bluefin tuna Indo-Pacific bonito Tunas and bonito NEI Wahoo Seerfish NEI Swordfish Indo-Pacific sailfish Black marlin Indo-Pacific blue marlin Striped marlin Other NEI	5,104	1,542	3,562
			3602	YFT		95	83	12
			3603	BET		28	23	5
			3604	LOT				
			3605	ALB				
			3606	KAW				
			3607	FRZ				
			3608	BIL				
			3609	COM				
			3610	GUT				
			3611	STS				
			3612	FRI				
			3613	BLT				
			3614	SBF				
			3615	BIP				
			3616	TUN				
			3617	WAH				
			3618	KGX				
			3619	SWO				
			3620	SFA				
			3621	BLM				
			3622	BLZ				
			3623	MLS				
			3624	OTH				
						7	6	1

1 ANNUAL LANDING BY SPECIES - 1996

1.2 Catch and Fishing Effort by Type of Fishing Gear and Size of Management

1.2.8 Coastal Pole and Line

(1) Indonesia

Catch unit in Tonnes

No. of fishing effort	Size of boat		Total	<5 GT	10-15 GT	15-25 GT	<25GT	30-50 GT	<30 GT	50 GT	60-100 GT
	Codes	Code No.									
No. of fishing units	TOTAL CATCH		76,479								
No. of trips											
No. of days											
No. of hauls											
No. of hours											
Species (group)											
Skipjack tuna	SKJ	3601	68,316		7,606			60,710			
Yellowfin tuna	YFT	3602	6,188		1,569			4,619			
Big-eye tuna	BET	3603									
Longtail tuna	LOT	3604									
Albacore	ALB	3605									
Eastern little tuna	KAW	3606									
Frigate and bullet tuna	FRZ	3607									
Indo-Pacific swordfish, sailfish and marlin	BIL	3608									
Narrow-barrred king mackerel	COM	3609									
King mackerel	GUT	3610									
Streked seerfish	STS	3611									
Frigate tuna	FRI	3612	1,975		1,125			850			
Bullet tuna	BLT	3613									
Southern bluefin tuna	SBF	3614									
Indo-Pacific bonito	BIP	3615									
Tunas and bonito NEI	TUN	3616									
Wahoo	WAH	3617									
Seerfish NEI	KGX	3618									
Swordfish	SWO	3619									
Indo-Pacific sailfish	SFA	3620									
Black marlin	BLM	3621									
Indo-Pacific blue marlin	BLZ	3622									
Striped marlin	MLS	3623									
Other NEI	OTH	3624									



1 ANNUAL LANDING BY SPECIES - 1996

1.2 Catch and Fishing Effort by Type of Fishing Gear and Size of Management  
1.2.10 Small Purse Seine

(1) Indonesia

Catch unit in Tonnes

Unit of fishing effort	Size of boat		Total	<5 GT	10-15 GT	15-25 GT	<25 GT	30-50 GT	<30 GT	50 GT	60-100 GT	>100 GT
	Codes	Code No.										
No. of fishing units												
No. of trips												
No. of days												
No. of hauls												
No. of hours												
	TOTAL CATCH		19,584				5,416		14,168			
Species (group)	Codes	Code No.	Total	<5 GT	10-15 GT	15-25 GT	<25 GT	30-50 GT	<30 GT	50 GT	60-100 GT	>100 GT
Skipjack tuna	SKJ	3601	10,421				2,600		7,821			
Yellowfin tuna	YFT	3602	2,115				546		1,569			
Big-eye tuna	BET	3603										
Longtail tuna	LOT	3604										
Albacore	ALB	3605										
Eastern little tuna	KAW	3606										
Frigate and bullet tuna	FRZ	3607										
Indo-Pacific swordfish, sailfish and marlin	BIL	3608										
Narrow-barred king mackerel	COM	3609										
King mackerel	GUT	3610										
Streked seerfish	STS	3611										
Frigate tuna	FRI	3612	7,048				2,270		4,778			
Bullet tuna	BLT	3613										
Southern bluefin tuna	SBF	3614										
Indo-Pacific bonito	BIP	3615										
Tunas and bonito NEI	TUN	3616										
Wahoo	WAH	3617										
Seerfish NEI	KGX	3618										
Swordfish	SWO	3619										
Indo-Pacific sailfish	SFA	3620										
Black marlin	BLM	3621										
Indo-Pacific blue marlin	BLZ	3622										
Striped marlin	MLS	3623										
Other NEI	OTH	3624										

# 1 ANNUAL LANDING BY SPECIES - 1996

## 1.2 Catch and Fishing Effort by Type of Fishing Gear and Size of Management

1.2.11 Seine Net

(1) Indonesia

Catch unit in Tonnes

Unit of fishing effort	Size of boat		Total	<5 GT	10-15 GT	15-25 GT	<25 GT	30-50 GT	<30 GT	50 GT	60-100 GT	>100 GT
	Codes	Code No.										
No. of fishing units	TOTAL CATCH		5,269	5,269								
No. of trips												
No. of days												
No. of hauls												
No. of hours												
Species (group)			Total	<5 GT	10-15 GT	15-25 GT	<25 GT	30-50 GT	<30 GT	50 GT	60-100 GT	>100 GT
Skipjack tuna	SKJ	3601	1,771	1,771								
Yellowfin tuna	YFT	3602	485	485								
Big-eye tuna	BET	3603										
Longtail tuna	LOT	3604										
Albacore	ALB	3605										
Eastern little tuna	KAW	3606										
Frigate and bullet tuna	FRZ	3607										
Indo-Pacific swordfish, sailfish and marlin	BIL	3608										
Narrow-barred king mackerel	COM	3609										
King mackerel	GUT	3610										
Straked seerfish	STS	3611										
Frigate tuna	FRI	3612	3,013	3,013								
Bullet tuna	BLT	3613										
Southern bluefin tuna	SBF	3614										
Indo-Pacific bonito	BIP	3615										
Tunas and bonito NEI	TUN	3616										
Wahoo	WAH	3617										
Seerfish NEI	KGX	3618										
Swordfish	SWO	3619										
Indo-Pacific sailfish	SFA	3620										
Black marlin	BLM	3621										
Indo-Pacific blue marlin	BLZ	3622										
Striped marlin	MLS	3623										
Other NEI	OTH	3624										

1 ANNUAL LANDING BY SPECIES - 1996

1.2 Catch and Fishing Effort by Type of Fishing Gear and Size of Management

1.2.12 Large Purse Seine

(1) Indonesia

Catch unit in Tonnes

Unit of fishing effort	Size of boat		Total	<5 GT	10-15 GT	15-25 GT	<25 GT	30-50 GT	<30 GT	50 GT	60-100 GT	>100 GT	>200 GT
	Codes	Code No											
TOTAL CATCH													
Species (group)													
Skipjack tuna	SKJ	3601	Total 9,874	<5 GT	10-15 GT	15-25 GT	<25 GT	30-50 GT	<30 GT	50 GT	60-100 GT	>100 GT	>200 GT
Yellowfin tuna	YFT	3602											
Big-eye tuna	BET	3603	Total 5,014	<5 GT	10-15 GT	15-25 GT	<25 GT	30-50 GT	<30 GT	50 GT	60-100 GT	>100 GT	>200 GT
Longtail tuna	LOT	3604											
Albacore	ALB	3605	Total 4,860	<5 GT	10-15 GT	15-25 GT	<25 GT	30-50 GT	<30 GT	50 GT	60-100 GT	>100 GT	>200 GT
Eastern little tuna	KAW	3606											
Frigate and bullet tuna	FRZ	3607	Total 5,014	<5 GT	10-15 GT	15-25 GT	<25 GT	30-50 GT	<30 GT	50 GT	60-100 GT	>100 GT	>200 GT
Indo-Pacific swordfish, sailfish and marlin	BIL	3608											
Narrow-barred king mackerel	COM	3609	Total 4,860	<5 GT	10-15 GT	15-25 GT	<25 GT	30-50 GT	<30 GT	50 GT	60-100 GT	>100 GT	>200 GT
King mackerel	GUT	3610											
Straked seerfish	STS	3611	Total 5,014	<5 GT	10-15 GT	15-25 GT	<25 GT	30-50 GT	<30 GT	50 GT	60-100 GT	>100 GT	>200 GT
Frigate tuna	FRI	3612											
Bullet tuna	BLT	3613	Total 4,860	<5 GT	10-15 GT	15-25 GT	<25 GT	30-50 GT	<30 GT	50 GT	60-100 GT	>100 GT	>200 GT
Southern bluefin tuna	SBF	3614											
Indo-Pacific bonito	BIP	3615	Total 5,014	<5 GT	10-15 GT	15-25 GT	<25 GT	30-50 GT	<30 GT	50 GT	60-100 GT	>100 GT	>200 GT
Tunas and bonito NEI	TUN	3616											
Wahoo	WAH	3617	Total 4,860	<5 GT	10-15 GT	15-25 GT	<25 GT	30-50 GT	<30 GT	50 GT	60-100 GT	>100 GT	>200 GT
Seerfish NEI	KGX	3618											
Swordfish	SWO	3619	Total 5,014	<5 GT	10-15 GT	15-25 GT	<25 GT	30-50 GT	<30 GT	50 GT	60-100 GT	>100 GT	>200 GT
Indo-Pacific sailfish	SFA	3620											
Black marlin	BLM	3621	Total 4,860	<5 GT	10-15 GT	15-25 GT	<25 GT	30-50 GT	<30 GT	50 GT	60-100 GT	>100 GT	>200 GT
Indo-Pacific blue marlin	BLZ	3622											
Striped marlin	MLS	3623	Total 5,014	<5 GT	10-15 GT	15-25 GT	<25 GT	30-50 GT	<30 GT	50 GT	60-100 GT	>100 GT	>200 GT
Other NEI	OTH	3624											

1 ANNUAL LANDING BY SPECIES - 1996

1.2 Catch and Fishing Effort by Type of Fishing Gear and Size of Management

1.2.13 Hand Line

(1) Indonesia

Catch unit in Tonnes

Unit of fishing effort	Size of boat		Total	<5 GT	10-15GT	15-25 GT	<25 GT	30-50 GT	<30 GT	50 GT	60-100 GT	>100 GT
	Codes	Code No.										
No. of fishing units	TOTAL CATCH		9,716	9,716								
No. of trips												
No. of days												
No. of hauls												
No. of hours												
	Species (group)	Codes	Code No.	Total	<5 GT	10-15 GT	15-25 GT	30-50 GT	<30 GT	50 GT	60-100 GT	>100 GT
	Skipjack tuna	SKJ	3601	3,192	3,192							
	Yellowfin tuna	YFT	3602	5,913	5,913							
	Big-eye tuna	BET	3603									
	Longtail tuna	LOT	3604									
	Albacore	ALB	3605									
	Eastern little tuna	KAW	3606									
	Frigate and bullet tuna	FRZ	3607									
	Indo-Pacific swordfish, sailfish and marlin	BIL	3608									
	Narrow-barred king mackerel	COM	3609									
	King mackerel	GUT	3610									
	Striked seerfish	STS	3611									
	Frigate tuna	FRI	3612	611	611							
	Bullet tuna	BLT	3613									
	Southern bluefin tuna	SBF	3614									
	Indo-Pacific bonito	BIP	3615									
	Tunas and bonito NEI	TUN	3616									
	Wahoo	WAH	3617									
	Seerfish NEI	KGX	3618									
	Swordfish	SWO	3619									
	Indo-Pacific sailfish	SFA	3620									
	Black marlin	BLM	3621									
	Indo-Pacific blue marlin	BLZ	3622									
	Striped marlin	MLS	3623									
	Other NEI	OTH	3624									

1 ANNUAL LANDING BY SPECIES - 1996

1.2 Catch and Fishing Effort by Type of Fishing Gear and Size of Management

1.2.14 Troll Line

(1) Indonesia

Unit of fishing effort	Size of boat		Total	<5 GT	10-15 GT	15-25 GT	30-50 GT	<30 GT	50 GT	60-100 GT	>100 GT
	Codes	Code No.									
No. of fishing units	TOTAL CATCH		1,428			1,429					
No. of trips			Total	<5 GT	10-15 GT	15-25 GT	30-50 GT	<30 GT	50 GT	60-100 GT	>100 GT
No. of days			719			719					
No. of hauls			710			710					
No. of hours											
	Species (group)										
	Skipjack tuna	SKJ									
	Yellowfin tuna	YFT									
	Big-eye tuna	BET									
	Longtail tuna	LOT									
	Albacore	ALB									
	Eastern little tuna	KAW									
	Frigate and bullet tuna	FRZ									
	Indo-Pacific swordfish, sailfish and marlin	BIL									
	Narrow-barred king mackerel	COM									
	King mackerel	GUT									
	Streaked seerfish	STS									
	Frigate tuna	FRI									
	Bullet tuna	BLT									
	Southern bluefin tuna	SBF									
	Indo-Pacific bonito	BIP									
	Tunas and bonito NEI	TUN									
	Wahoo	WAH									
	Seerfish NEI	KGX									
	Swordfish	SWO									
	Indo-Pacific sailfish	SFA									
	Black marlin	BLM									
	Indo-Pacific blue marlin	BLZ									
	Striped marlin	MLS									
	Other NEI	OTH									



1 ANNUAL LANDING BY SPECIES - 1996

1.2 Catch and Fishing Effort by Type of Fishing Gear and Size of Management

1.2.15 Unclassified

(1) Indonesia

Catch unit in Tonnes

Unit of fishing effort	Size of boat		Total	<5 GT	10-15 GT	15-25 GT	<25 GT	30-50 GT	<30 GT	50 GT	60-100 GT	>100 GT
	Codes	Code No.										
No. of fishing units	TOTAL CATCH		184,063	184,063	0			0				
No. of trips			Total	<5 GT	10-15 GT	15-25 GT	<25 GT	30-50 GT	<30 GT	50 GT	60-100 GT	>100 GT
No. of days			47,005	47,005								
No. of hauls			31,338	31,338								
No. of hours												
	Species (group)											
	Skipjack tuna	SKJ										
	Yellowfin tuna	YFT										
	Big-eye tuna	BET										
	Longtail tuna	LOT										
	Albacore	ALB										
	Eastern little tuna	KAW										
	Frigate and bullet tuna	FRZ										
	Indo-Pacific swordfish, sailfish and marlin	BIL										
	Narrow-barred king mackerel	COM										
	King mackerel	GUT										
	Streked seerfish	STS										
	Frigate tuna	FRI		105720								
	Bullet tuna	BLT										
	Southern bluefin tuna	SBF										
	Indo-Pacific bonito	BIP										
	Tunas and bonito NEI	TUN										
	Wahoo	WAH										
	Seerfish NEI	KGX										
	Swordfish	SWO										
	Indo-Pacific sailfish	SFA										
	Black marlin	BLM										
	Indo-Pacific blue marlin	BLZ										
	Striped marlin	MLS										
	Other NEI	OTH										350

1 ANNUAL LANDING BY SPECIES - 1996

1.2 Catch and Fishing Effort by Type of Fishing Effort by Size of Management  
1.2.15 Unclassified

(2) Philippines

		Catch unit in Tonnes	
Unit of fishing effort	Size of boat	Total	Less than 3 GRT
No. of fishing units			
No. of trips			
No. of days			
No. of hauls			
No. of hours			
TOTAL CATCH			
Species (group)	CODES	Code No.	Less than 3 GRT
Skipjack tuna	SKJ	3601	19,033
Yellowfin tuna	YFT	3602	27,990
Big-eye tuna	BET	3603	
Longtail tuna	LOT	3604	
Albacore	ALB	3605	
Eastern little tuna	KAW	3606	
Frigate and bullet tuna	FRZ	3607	
Indo-Pacific swordfish, sailfish and marlin	BIL	3608	
Narrow-barred king mackerel	COM	3609	
King mackerel	GUT	3610	
Streked seerfish	STS	3611	
Frigate tuna	FRI	3612	
Bullet tuna	BLT	3613	
Southern bluefin tuna	SBF	3614	
Indo-Pacific bonito	BIP	3615	
Tunas and bonito NEI	TUN	3616	
Wahoo	WAH	3617	
Seerfish NEI	KGX	3618	
Swordfish	SWO	3619	
Indo-Pacific sailfish	SFA	3620	
Black marlin	BLM	3621	
Indo-Pacific blue marlin	BLZ	3622	
Striped marlin	MLS	3623	
Other NEI	OTH	3624	
		Total	More than 3 GRT
		284,598	192,545
		110,004	90,971
		61,280	33,290
		24,345	17,996
		88,969	50,288
			6,349
			38,681

2 MONTHLY LANDING BY SPECIES - 1996

2.1. Catch and Fishing Effort by Type of Fishing Gear and By Month

2.1.1 Hook and Line, Gill Net, and Ring Net

(1) Brunei Darussalam

Catch unit in Tonnes

Unit of fishing effort	Month												Total	
	Jan.	Feb.	March	April	May	June	July	August	Sept.	Oct.	Nov.	Dec.		
No. of units														
No. of trips														
No. of days														
No. of hauls														
<b>TOTAL CATCH</b>														
	58.7	6.2	2.5	7	6.2	1.9	8	9.8	3.3	5.6	4.2	1.7	2.3	
Species (group)	CODES	Code No.	Jan.	Feb.	March	April	May	June	July	August	Sept.	Oct.	Nov.	Dec.
Skipjack tuna	SKJ	3601	0.1		0.1	0.1		0.1	0.1		0.1			
Yellowfin tuna	YFT	3602												
Big-eye tuna	BET	3603												
Longtail tuna	LOT	3604	1.1	0.5	1.3	1.1	0.4	1.5	1.8	0.6	1	0.8	0.3	0.4
Albacore	ALB	3605												
Eastern little tuna	KAW	3606	4	1.6	4.5	4	1.2	5.1	6.3	2.2	3.6	2.6	1.1	1.5
Frigate and bullet tuna	FRZ	3607												
Indo-Pacific swordfish, sailfish and marlin	BIL	3608												
Narrow-barred king mackerel	COM	3609												
King mackerel	GUT	3610												
Streked seerfish	STS	3611												
Frigate tuna	FRI	3612	1	0.4	1.1	1	0.3	1.3	1.6	0.5	0.9	0.7	0.3	0.4
Bullet tuna	BLT	3613												
Southern bluefin tuna	SBF	3614												
Indo-Pacific bonito	BIP	3615												
Tunas and bonito NEI	TUN	3616												
Wahoo	WAH	3617												
Seerfish NEI	KGX	3618												
Swordfish	SWO	3619												
Indo-Pacific sailfish	SFA	3620												
Black marlin	BLM	3621												
Indo-Pacific blue marlin	BLZ	3622												
Striped marlin	MLS	3623												
Other NEI	OTH	3624												

**2 MONTHLY LANDING BY SPECIES - 1996**

2.1. Catch and Fishing Effort by Type of Fishing Gear and By Month  
 2.1.2 Small Purse Seine  
 (1) Indonesia

Size of Boat: 15-25 GRT  
 Catch unit in KG

Unit of fishing effort	Month	Total	January	February	March	April	May	June	July	August	Sept.	Oct.	Nov.	Dec.
No. of units														
No. of trips		3,507	313	185	166	236	256	364	271	286	310	291	380	449
No. of days														
No. of hauls														
No. of trawling hours														
<b>TOTAL CATCH</b>														
		2,647,324	315,285	323,044	106,471	182,696	67,428	21,5755	191,716	197,054	272,844	243,926	243,780	287,325
		1,081,964	211,402	274,737	70,817	124,913	23,016	99,204	95,948	89,719	71,352	6,954	1,778	12,124
Skipjack tuna														
Yellowfin tuna														
Big-eye tuna														
Longtail tuna														
Albacore														
Eastern little tuna														
Frigate and bullet tuna														
Indo-Pacific swordfish, sailfish and marlin														
Narrow-barred king mackerel														
King mackerel														
Straked seerfish														
Frigate tuna														
Bullet tuna														
Southern bluefin tuna														
Indo-Pacific bonito														
Tunas and bonito NEI														
Wahoo														
Seerfish NEI														
Swordfish														
Indo-Pacific sailfish														
Black marlin														
Indo-Pacific blue marlin														
Striped marlin														
Other NEI (TUNA)		100,290	5,608	8,634	9,607	10,300		3,966	10,466	5,295	19,100	21,577	1,968	3,769

**2 MONTHLY LANDING BY SPECIES - 1996**

2.1. Catch and Fishing Effort by Type of Fishing Gear and By Month

2.1.3 Pole and ILine

(1) Japan

Unit: Tonnes

Unit of fishing effort	Month												Total			
	January	February	March	April	May	June	July	August	Sept.	Oct.	Nov.	Dec.				
No. of fishing units																
No. of trips																
No. of days																
No. of hauls	67	99	104	115	317	4	0	1	0	4	22	10				
No. of hours																
No. of hooks																
	5,250	5,13	666	800	2972	38	0	0	0	2	83	29				
<b>TOTAL CATCH</b>																
Species (group)	CODES	Code No.	January	February	March	April	May	June	July	August	Sept.	Oct.	Nov.	Dec.		
Skipjack tuna	SKJ	3601	131	492	621	793	2,959	37	0	0	0	1	70	12		
Yellowfin tuna	YFT	3602	10	17	27	5	9	1	0	0	0	1	12	16		
Big-eye tuna	BET	3603	5	1	17	2	3	0	0	0	0	0	1	0		
Longtail tuna	LOT	3604	0	0	0	0	0	0	0	0	0	0	0	0		
Albacore	ALB	3605	0	0	0	0	0	0	0	0	0	0	0	0		
Eastern little tuna	KAW	3606	0	0	0	0	0	0	0	0	0	0	0	0		
Frigate and bullet tuna	FRZ	3607	0	0	0	0	0	0	0	0	0	0	0	0		
Indo-Pacific swordfish, sailfish and marlin	BIL	3608	0	0	0	0	0	0	0	0	0	0	0	0		
Narrow-barred king mackerel	COM	3609	0	0	0	0	0	0	0	0	0	0	0	0		
King mackerel	GUT	3610	0	0	0	0	0	0	0	0	0	0	0	0		
Streked seerfish	STS	3611	0	0	0	0	0	0	0	0	0	0	0	0		
Frigate tuna	FRI	3612	0	0	0	0	0	0	0	0	0	0	0	0		
Bullet tuna	BLT	3613	0	0	0	0	0	0	0	0	0	0	0	0		
Southern bluefin tuna	SBF	3614	0	0	0	0	0	0	0	0	0	0	0	0		
Indo-Pacific bonito	BIP	3615	0	0	0	0	0	0	0	0	0	0	0	0		
Tunas and bonito NEI	TUN	3616	0	0	0	0	0	0	0	0	0	0	0	0		
Wahoo	WAH	3617	0	0	0	0	0	0	0	0	0	0	0	0		
Seerfish NEI	KGX	3618	0	0	0	0	0	0	0	0	0	0	0	0		
Swordfish	SWO	3619	0	0	0	0	0	0	0	0	0	0	0	0		
Indo-Pacific sailfish	SFA	3620	0	0	0	0	0	0	0	0	0	0	0	0		
Black marlin	BLM	3621	0	0	0	0	0	0	0	0	0	0	0	0		
Indo-Pacific blue marlin	BLZ	3622	0	0	0	0	0	0	0	0	0	0	0	0		
Striped marlin	MLS	3623	0	0	0	0	0	0	0	0	0	0	0	0		
Other NEI	OTH	3624	1	3	1	0	1	0	0	0	0	0	0	0		

2 MONTHLY LANDING BY SPECIES - 1996

2.1. Catch and Fishing Effort by Type of Fishing Gear and By Month  
2.1.4 Longline

(1) Indonesia

Size of Boat: 50-100 GRT  
Unit of Catch: KG

Unit of fishing effort	Total	Month												Total	Dec.
		January	February	March	April	May	June	July	August	Sept.	Oct.	Nov.			
No. of units	726	33	31	114	59	37	76	86	63	40	67	53	67		
No. of trips															
No. of days															
No. of hauls															
No. of trawling hours															
TOTAL CATCH		2,299,302	77,938	399,109	180,096	101,780	267,386	298,192	170,780	97,073	192,542	180,751	203,707		
Species (group)	CODES	Code No.	January	February	March	April	May	June	July	August	Sept.	Oct.	Nov.	Dec.	
Skipjack tuna	SKJ	3601													
Yellowfin tuna	YFT	3602	23,670	15,094	152,876	74,350	40,367	136,151	159,430	121,742	41,216	86,363	90,807	95,370	
Big-eye tuna	BET	3603	90,767	52,887	190,538	76,608	35,045	73,416	58,997	42,405	36,758	76,010	80,364	96,589	
Longtail tuna	LOT	3604													
Albacore	ALB	3605	1,202	2,212	17,463	21,826	19,358	55,765	79,765	6,633	7,266	1,682			
Eastern little tuna	KAW	3606													
Frigate and bullet tuna	FRZ	3607													
Indo-Pacific swordfish, sailfish and marlin	BIL	3608													
Narrow-barred king mackerel	COM	3609													
King mackerel	GUT	3610													
Streked seerfish	STS	3611													
Frigate tuna	FRI	3612													
Bullet tuna	BLT	3613													
Southern bluefin tuna	SBF	3614													
Indo-Pacific bonito	BIP	3615						2,054							
Tunas and bonito NEI	TUN	3616	14,309	7,745	38,232	7,312	7,010				11,833	28,487	9,580	11,748	
Wahoo	WAH	3617													
Seerfish NEI	KGX	3618													
Swordfish	SWO	3619													
Indo-Pacific sailfish	SFA	3620													
Black marlin	BLM	3621													
Indo-Pacific blue marlin	BLZ	3622													
Striped marlin	MLS	3623													
Other NEI	OTH	3624													

2 MONTHLY LANDING BY SPECIES - 1996

2.1. Catch and Fishing Effort by Type of Fishing Gear and By Month

2.1.4 Longline

(2) Japan

Catch Unit: Tonnes

Unit of fishing effort	Month											
	January	February	March	April	May	June	July	August	Sept.	Oct.	Nov.	Dec.
No. of fishing units												
No. of trips												
No. of days												
No. of hauls												
No. of hours												
No. of hooks	96,218	12,695		51,466	98,075	18,729	-	-	67,421	60,223	13,799	
	13	1		19	36	4			24	10	5	
	112											
	Total											
	CODES	Code No.										
Skipjack tuna	SKJ	3601										
Yellowfin tuna	YFT	3602	23									
Big-eye tuna	BET	3603	45	1	16	2			1	8	2	
Longtail tuna	LOT	3604			5				9			
Albacore	ALB	3605										
Eastern little tuna	KAW	3606	25		8				10	2	3	
Frigate and bullet tuna	FRZ	3607										
Indo-Pacific swordfish, sailfish and marlin	BIL	3608										
Narrow-barred king mackerel	COM	3609										
King mackerel	GUT	3610										
Streked seerfish	STS	3611										
Frigate tuna	FRI	3612										
Bullet tuna	BLT	3613										
Southern bluefin tuna	SBF	3614										
Indo-Pacific bonito	BIP	3615										
Tunas and bonito NEI	TUN	3616										
Wahoo	WAH	3617										
Seerfish NEI	KGX	3618										
Swordfish	SWO	3619	16	1	6	2			3			
Indo-Pacific sailfish	SFA	3620										
Black marlin	BLM	3621										
Indo-Pacific blue marlin	BLZ	3622	2									
Striped marlin	MLS	3623	1		1							
Other NEI	OTH	3624										

2 MONTHLY LANDING BY SPECIES - 1996

2.1. Catch and Fishing Effort by Type of Fishing Gear and By Month  
 2.1.5 Pole and Line  
 (1) Japan

Catch Unit: Tonnes

Unit of fishing effort	Month		Total	January	February	March	April	May	June	July	August	Sept.	Oct.	Nov.	Dec.
	CODES	Code No.													
TOTAL CATCH															
No. of fishing units			5,250	147	513	666	800	2,972	38				2	83	29
No. of trips															
No. of days				67	99	104	115	317	4				4	22	10
No. of hauls															
No. of hours															
No. of hooks															
	Species (group)	CODES	Code No.	January	February	March	April	May	June	July	August	Sept.	Oct.	Nov.	Dec.
	Skipjack tuna	SKJ	3601	131	492	621	793	2,959	37				1	70	12
	Yellowfin tuna	YFT	3602	10	17	27	5	9	1				1	12	16
	Big-eye tuna	BET	3603	5	1	17	2	3						1	
	Longtail tuna	LOT	3604												
	Albacore	ALB	3605												
	Eastern little tuna	KAW	3606												
	Frigate and bullet tuna	FRZ	3607												
	Indo-Pacific swordfish, sailfish and marlin	BIL	3608												
	Narrow-barred king mackerel	COM	3609												
	King mackerel	GUT	3610												
	Straked seerfish	STS	3611												
	Frigate tuna	FRI	3612												
	Bullet tuna	BLT	3613												
	Southern bluefin tuna	SBF	3614												
	Indo-Pacific bonito	BIP	3615												
	Tunas and bonito NEI	TUN	3616												
	Wahoo	WAH	3617												
	Seerfish NEI	KGX	3618												
	Swordfish	SWO	3619												
	Indo-Pacific sailfish	SFA	3620												
	Black marlin	BLM	3621												
	Indo-Pacific blue marlin	BLZ	3622												
	Striped marlin	MLS	3623												
	Other NEI	OTH	3624	1	3	1		1							1



2 MONTHLY LANDING BY SPECIES - 1996

2.1. Catch and Fishing Effort by Month

2.1.6 Unclassified

(1) Malaysia

Catch Unit: Tonnes

Unit of fishing effort	Month												Total	
	January	February	March	April	May	June	July	August	Sept.	Oct.	Nov.	Dec.		
No. of units	3,925	4,248	4,301	4,498	5,364	4,532	4,568	3,935	4,640	4,262	3,748	2,641		
No. of trips	274	10	61	24	9	6	4	23	13	31	31	35		
No. of days	2,714	3,222	2,873	3,150	4,025	3,344	3,221	2,783	3,557	2,925	2,584	1,590		
No. of hauls	1,184	1,016	1,367	1,324	1,330	1,182	1,343	1,129	1,070	1,306	1,133	1,016		
TOTAL CATCH														
Species (group)	CODES	Code No.	January	February	March	April	May	June	July	August	Sept.	Oct.	Nov.	Dec.
Skipjack tuna	SKJ	3601												
Yellowfin tuna	YFT	3602												
Big-eye tuna	BET	3603												
Longtail tuna	LOT	3604												
Albacore	ALB	3605												
Eastern little tuna	KAW	3606												
Frigate and bullet tuna	FRZ	3607												
Indo-Pacific swordfish, sailfish and marlin	BIL	3608	27	10	61	24	9	6	4	23	13	31	31	35
Narrow-barred king mackerel	COM	3609												
King mackerel	GUT	3610												
Straked seerfish	STS	3611												
Frigate tuna	FRI	3612												
Bullet tuna	BLT	3613												
Southern bluefin tuna	SBF	3614												
Indo-Pacific bonito	BIP	3615												
Tunas and bonito NEI	TUN	3616	2,714	3,222	2,873	3,150	4,025	3,344	3,221	2,783	3,557	2,925	2,584	1,590
Wahoo	WAH	3617	1,184	1,016	1,367	1,324	1,330	1,182	1,343	1,129	1,070	1,306	1,133	1,016
Seerfish NEI	KGX	3618												
Swordfish	SWO	3619												
Indo-Pacific sailfish	SFA	3620												
Black marlin	BLM	3621												
Indo-Pacific blue marlin	BLZ	3622												
Striped marlin	MLS	3623												
Other NEI	OTH	3624												

2 MONTHLY LANDING BY SPECIES - 1996

2.2. Catch and Fishing Effort by Area

2.2.1 Unclassified

(1) Malaysia

Sub-area: Peninsular of Malaysia

Catch Unit: Tonnes

Unit of fishing effort	Month	TOTAL CATCH														
		Total	January	February	March	April	May	June	July	August	Sept.	Oct.	Nov.	Dec.		
No. of units		240,503														
No. of trips		3,406,221														
No. of days		3,797,925														
No. of hauls		10,962,465														
		20,622	801	1,110	1,522	1,828	1,762	2,266	2,076	2,114	2,235	2,050	1,759	1,099		
Species (group)	CODES	Code No.	January	February	March	April	May	June	July	August	Sept.	Oct.	Nov.	Dec.		
Skipjack tuna	SKJ	3601														
Yellowfin tuna	YFT	3602														
Big-eye tuna	BET	3603														
Longtail tuna	LOT	3604														
Albacore	ALB	3605														
Eastern little tuna	KAW	3606														
Frigate and bullet tuna	FRZ	3607														
Indo-Pacific swordfish, sailfish and marlin	BIL	3608	1	0	1	19	0	1	1	13	0	10	4	1		
Narrow-barred king mackerel	COM	3609														
King mackerel	GUT	3610														
Streked seerfish	STS	3611														
Frigate tuna	FRI	3612														
Bullet tuna	BLT	3613														
Southern bluefin tuna	SBF	3614														
Indo-Pacific bonito	BIP	3615														
Tunas and bonito NEI	TUN	3616	269	788	1,017	1,327	1,220	1,810	1,404	1,571	1,742	1,415	1,090	532		
Wahoo	WAH	3617														
Seerfish NEI	KGX	3618	531	322	504	482	542	455	671	530	493	625	665	566		
Swordfish	SWO	3619														
Indo-Pacific sailfish	SFA	3620														
Black marlin	BLM	3621														
Indo-Pacific blue marlin	BLZ	3622														
Striped marlin	MLS	3623														
Other NEI	OTH	3624														

2 MONTHLY LANDING BY SPECIES - 1996

2.1. Catch and Fishing Effort by Area

2.2.1 Unclassified

(1) Malaysia

Sub-area: West Coast of Peninsular Malaysia

Catch Unit: Tonnes

Unit of fishing effort	Month												Total											
	January	February	March	April	May	June	July	August	Sept.	Oct.	Nov.	Dec.												
No. of units																								
No. of trips																								
No. of days																								
No. of hauls																								
<b>TOTAL CATCH</b>	<b>441</b>	<b>502</b>	<b>762</b>	<b>842</b>	<b>845</b>	<b>1,337</b>	<b>953</b>	<b>870</b>	<b>1,121</b>	<b>795</b>	<b>858</b>	<b>738</b>												
	January	February	March	April	May	June	July	August	Sept.	Oct.	Nov.	Dec.												
	10,064	Total	Total	Total	Total	Total	Total	Total	Total	Total	Total	Total												
	3601	3602	3603	3604	3605	3606	3607	3608	3609	3610	3611	3612	3613	3614	3615	3616	3617	3618	3619	3620	3621	3622	3623	3624
Skipjack tuna	SKJ	YFT	BET	LOT	ALB	KAW	FRZ	BIL	COM	GUT	STS	FRI	BLT	SBF	BIP	TUN	WAH	KGX	SWO	SFA	BLM	BLZ	MLS	OTH
Yellowfin tuna																								
Big-eye tuna																								
Longtail tuna																								
Albacore																								
Eastern little tuna																								
Frigate and bullet tuna																								
Indo-Pacific swordfish, sailfish and marlin																								
Narrow-barred king mackerel																								
King mackerel																								
Streked seerfish																								
Frigate tuna																								
Bullet tuna																								
Southern bluefin tuna																								
Indo-Pacific bonito																								
Tunas and bonito NEI																								
Wahoo																								
Seerfish NEI																								
Swordfish																								
Indo-Pacific sailfish																								
Black marlin																								
Indo-Pacific blue marlin																								
Striped marlin																								
Other NEI																								
	119	250	411	552	583	1,093	622	556	837	483	405	267												
	322	252	351	290	262	244	331	314	284	312	453	471												
	6,178	3,886																						

2 MONTHLY LANDING BY SPECIES - 1996

2.2. Catch and Fishing Effort by Area

2.2.1. Unclassified

(1) Malaysia

Sub-area: East Coast of Peninsular Malaysia

Catch Unit: Tonnes

Unit of fishing effort	Month	Total	January	February	March	April	May	June	July	August	Sept.	Oct.	Nov.	Dec.
			January	February	March	April	May	June	July	August	Sept.	Oct.	Nov.	Dec.
TOTAL CATCH		30,040	3,124	3,138	2,779	2,670	3,602	2,266	2,492	1,821	2,405	2,212	1,989	1,542
Species (group)		CODES	Code No.											
Skipjack tuna	SKJ	3601												
Yellowfin tuna	YFT	3602												
Big-eye tuna	BET	3603												
Longtail tuna	LOT	3604												
Albacore	ALB	3605												
Eastern little tuna	KAW	3606												
Frigate and bullet tuna	FRZ	3607												
Indo-Pacific swordfish, sailfish and marlin	BIL	3608	26	10	60	5	9	5	3	10	13	21	27	34
Narrow-barred king mackerel	COM	3609												
King mackerel	GUT	3610												
Straked seerfish	STS	3611												
Frigate tuna	FRI	3612												
Bullet tuna	BLT	3613												
Southern bluefin tuna	SBF	3614												
Indo-Pacific bonito	BIP	3615												
Tunas and bonito NEI	TUN	3616	2,445	2,434	1,856	1,823	2,805	1,534	1,817	1,212	1,815	1,510	1,494	1,058
Wahoo	WAH	3617	653	694	863	842	788	727	672	599	577	681	468	450
Seerfish NEI	KGX	3618												
Swordfish	SWO	3619												
Indo-Pacific sailfish	SFA	3620												
Black marlin	BLM	3621												
Indo-Pacific blue marlin	BLZ	3622												
Striped marlin	MLS	3623												
Other NEI	OTH	3624												

2 MONTHLY LANDING BY SPECIES - 1996

2.2. Catch and Fishing Effort by Area

2.2.1 Unclassified

(1) Malaysia

Sub-area: Sabah

Catch Unit: Tonnes

Unit of fishing effort	Month	Total	Catch Unit: Tonnes											
			January	February	March	April	May	June	July	August	Sept.	Oct.	Nov.	Dec.
TOTAL CATCH		20,781	2,296	2,341	1,979	1,766	1,540	1,666	1,761	1,321	1,798	1,683	1,398	1,232
Species (group)	CODES	Code No.	Jan	Feb	Mar	Apr	May	Jun	Jul	Aug	Sep	Oct	Nov	Dec
Skipjack tuna	SKJ	3601												
Yellowfin tuna	YFT	3602												
Big-eye tuna	BET	3603												
Longtail tuna	LOT	3604												
Albacore	ALB	3605												
Eastern little tuna	KAW	3606												
Frigate and bullet tuna	FRZ	3607												
Indo-Pacific swordfish, sailfish and marlin	BIL	3608	21	4	55	5	9	5	3	5	6	12	20	28
Narrow-barred king mackerel	COM	3609												
King mackerel	GUT	3610												
Streked seerfish	STS	3611												
Frigate tuna	FRI	3612												
Bullet tuna	BLT	3613												
Southern bluefin tuna	SBF	3614												
Indo-Pacific bonito	BIP	3615												
Tunas and bonito NEI	TUN	3616	1,791	1,837	1,434	1,262	1,081	1,295	1,388	941	1,497	1,357	170	887
Wahoo	WAH	3617												
Seerfish NEI	KGX	3618	484	500	490	499	450	366	370	375	295	314	308	317
Swordfish	SWO	3619												
Indo-Pacific sailfish	SFA	3620												
Black marlin	BLM	3621												
Indo-Pacific blue marlin	BLZ	3622												
Striped marlin	MLS	3623												
Other NEI	OTH	3624												

2 MONTHLY LANDING BY SPECIES - 1996

2.2. Catch and Fishing Effort by Area

2.2.1 Unclassified  
(1) Malaysia

Sub-area: Sarawak

Catch Unit: Tonnes

Unit of fishing effort	Month		Total	January	February	March	April	May	June	July	August	Sept.	Oct.	Nov.	Dec.
	CODES	Code No.		January	February	March	April	May	June	July	August	Sept.	Oct.	Nov.	Dec.
<b>TOTAL CATCH</b>															
No. of units			4,763	332	385	508	499	519	529	517	401	446	365	168	94
No. of trips															
No. of days															
No. of hauls															
Skipjack tuna	SKJ	3601													
Yellowfin tuna	YFT	3602													
Big-eye tuna	BET	3603													
Longtail tuna	LOT	3604													
Albacore	ALB	3605													
Eastern little tuna	KAW	3606													
Frigate and bullet tuna	FRZ	3607													
Indo-Pacific swordfish, sailfish and marlin	BIL	3608													
Narrow-barred king mackerel	COM	3609													
King mackerel	GUT	3610													
Streked seerfish	STS	3611													
Frigate tuna	FRI	3612													
Bullet tuna	BLT	3613													
Southern bluefin tuna	SBF	3614													
Indo-Pacific bonito	BIP	3615													
Tunas and bonito NEI	TUN	3616	2,345	228	239	198	198	252	239	286	227	252	127	79	20
Wahoo	WAH	3617													
Seerfish NEI	KGX	3618	2,418	104	146	310	301	267	290	231	174	194	238	89	74
Swordfish	SWO	3619													
Indo-Pacific sailfish	SFA	3620													
Black marlin	BLM	3621													
Indo-Pacific blue marlin	BLZ	3622													
Striped marlin	MLS	3623													
Other NEI	OTH	3624													

2 MONTHLY LANDING BY SPECIES - 1996

2.2. Catch and Fishing Effort by Area

2.2.1 Unclassified

(1) Malaysia

Sub-area: Labuan

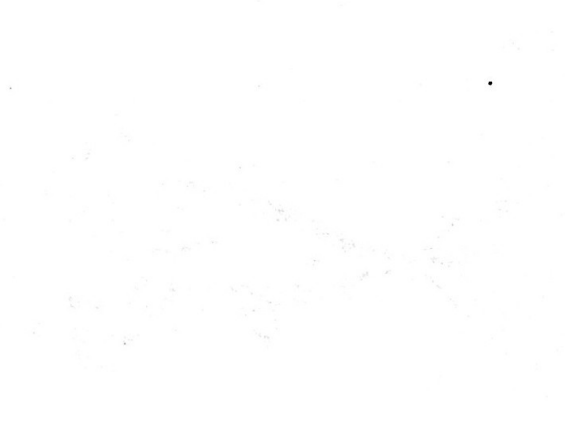
Catch Unit: Tonnes

Unit of fishing effort	Month												Total		
	Jan	Feb	Mar	Apr	May	June	July	Aug	Sept	Oct	Nov	Dec			
No. of units															
No. of trips															
No. of days															
No. of hauls															
TOTAL CATCH													4,496		
	Month	CODES	Code No.	Jan	Feb	Mar	Apr	May	June	July	Aug	Sept	Oct	Nov	Dec
Skipjack tuna		SKJ	3601												
Yellowfin tuna		YFT	3602												
Big-eye tuna		BET	3603												
Longtail tuna		LOT	3604												
Albacore		ALB	3605												
Eastern little tuna		KAW	3606												
Frigate and bullet tuna		FRZ	3607												
Indo-Pacific swordfish, sailfish and marlin		BIL	3608	5	6	5	0	0	0	0	5	7	9	7	6
Narrow-banded king mackerel		COM	3609												
King mackerel		GUT	3610												
Streked seerfish		STS	3611												
Frigate tuna		FRI	3612												
Bullet tuna		BLT	3613												
Southern bluefin tuna		SBF	3614												
Indo-Pacific bonito		BIP	3615												
Tunas and bonito NEI		TUN	3616	426	358	224	363	1,472	0	143	44	66	26	345	151
Wahoo		WAH	3617												
Seerfish NEI		KGX	3618	65	48	63	42	71	71	71	50	88	129	71	59
Swordfish		SWO	3619												
Indo-Pacific sailfish		SFA	3620												
Black marlin		BLM	3621												
Indo-Pacific blue marlin		BLZ	3622												
Striped marlin		MLS	3623												
Other NEI		OTH	3624												
				3,618	828										





Common Tuna Species In  
The South China Sea Area




*Thunnus albacares*  
(yellow fin tuna)



**APPENDIX** *omus petan*  
*nia k tunat*



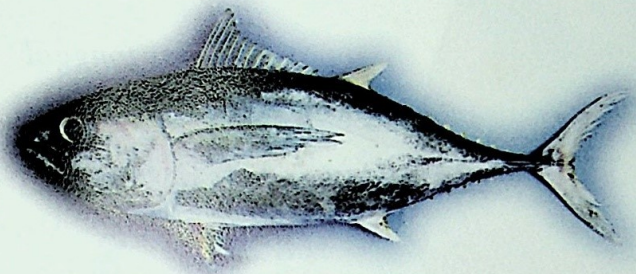
*Axiis obesus*  
(big eye tuna)



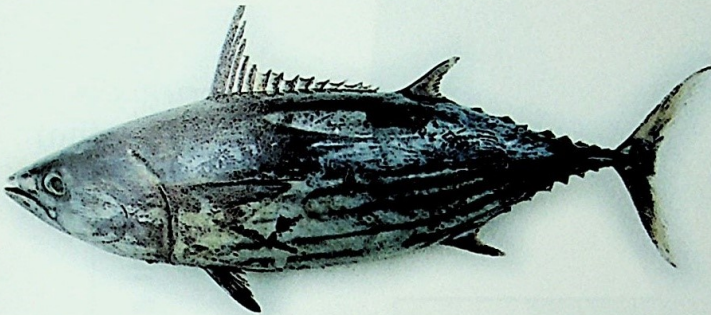
*Axiis rochei*  
(bullet tuna)

ALPHABETIC

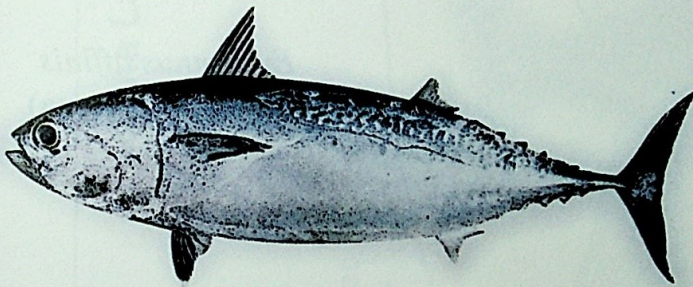
## Common Tuna Species In The South China Sea Area



*Thunnus albacares*  
(yellow fin tuna)



*Katsuwonus pelamis*  
(skipjack tuna)



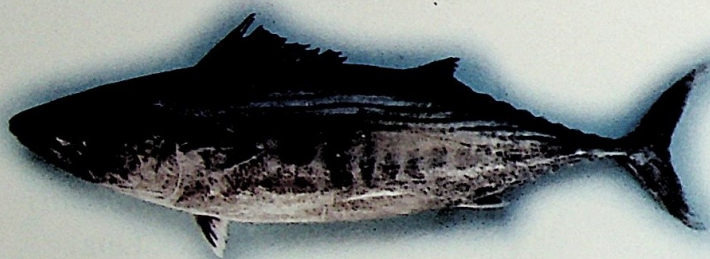
*Auxis thazard*  
(Frigate tuna)



*Auxis rochei*  
(bullet tuna)



*Thunnus tonggol*  
(longtail tuna)



*Sarda orientalis*  
(Indo-pacific bonito)  
(Striped bonito)



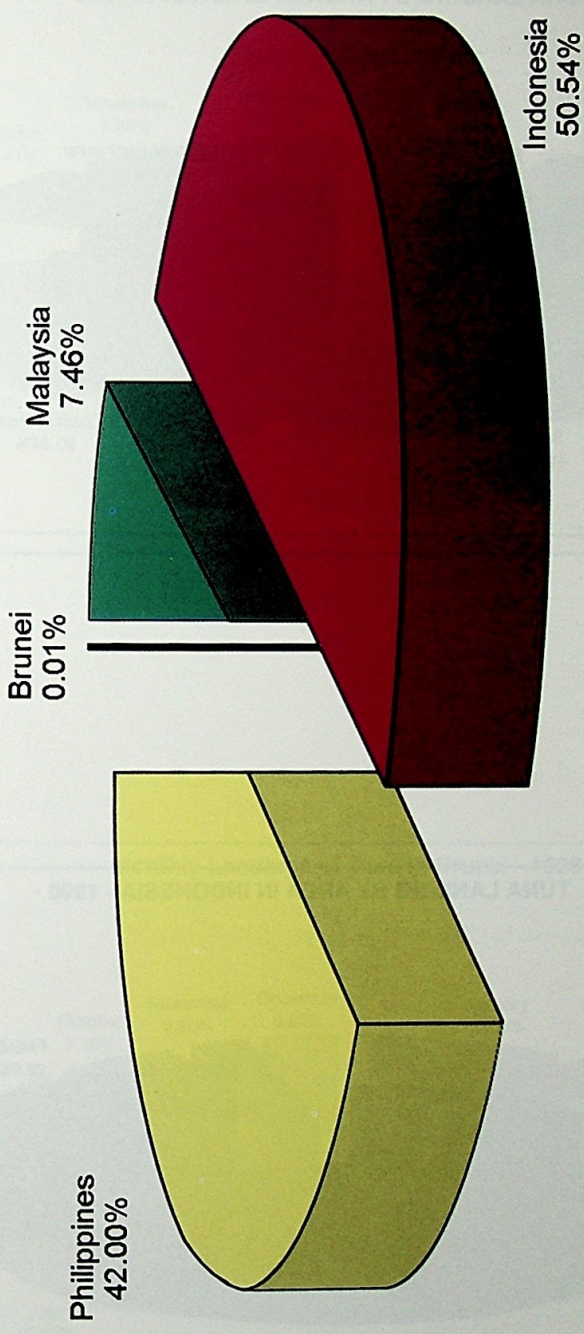
*Euthynnus affinis*  
(eastern little tuna)



*Thunnus obesus*  
(Big eye)

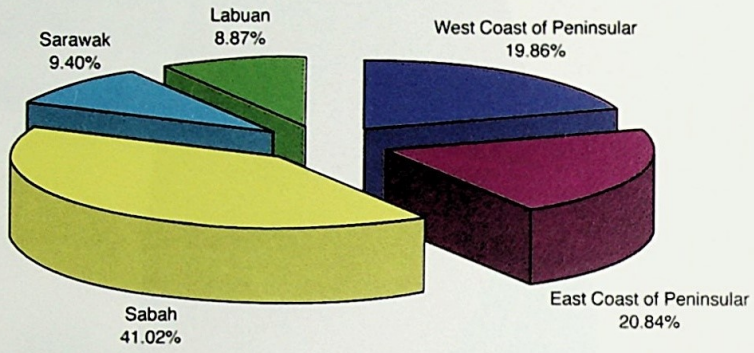
# Tuna Landings in Southeast Asian Region

1996

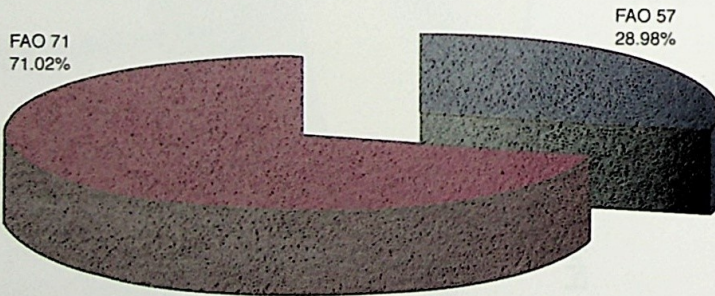


\*From the data available.

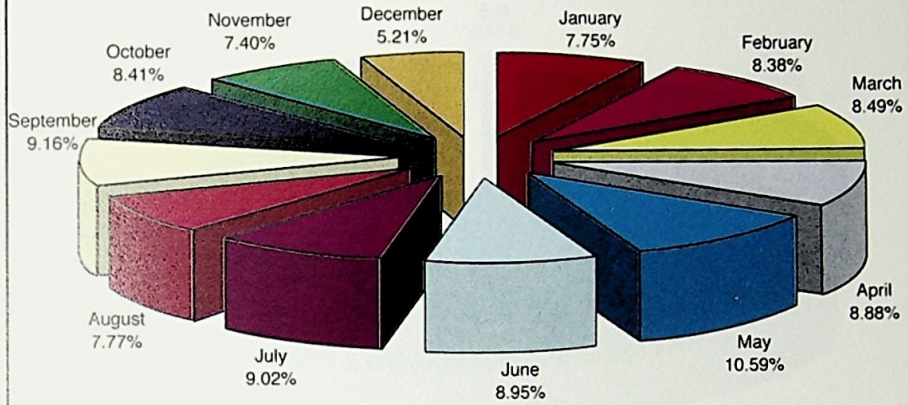
TUNA LANDING BY AREA IN MALAYSIA - 1996 -



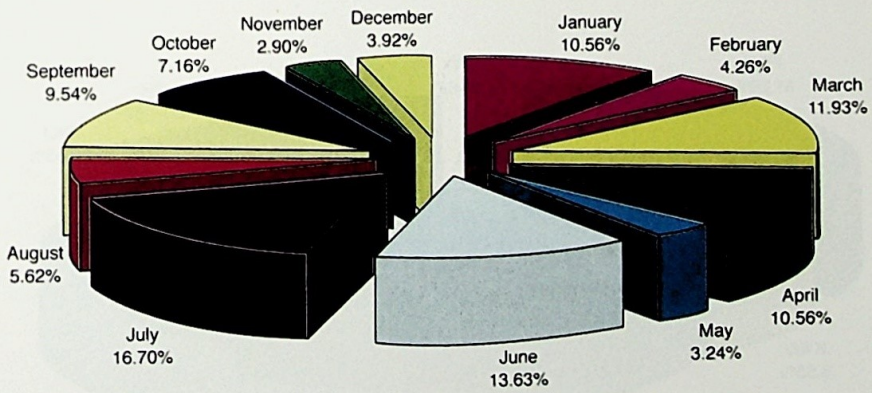
TUNA LANDING BY AREA IN INDONESIA - 1996 -



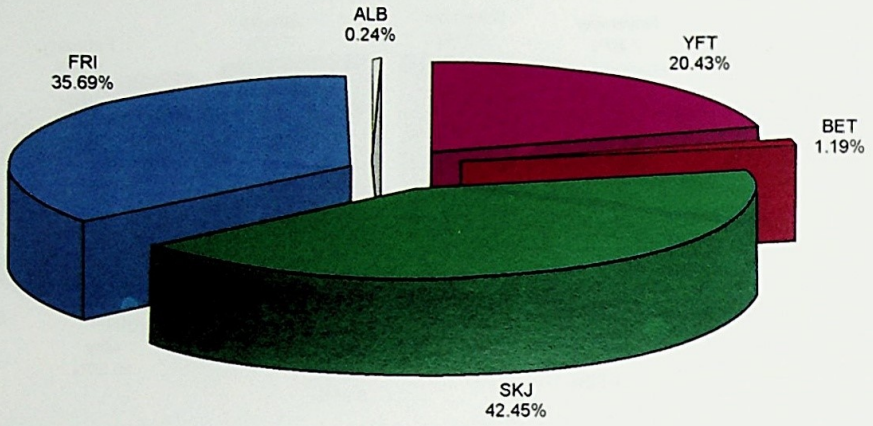
Monthly Landings of Tuna in Malaysia -1996-



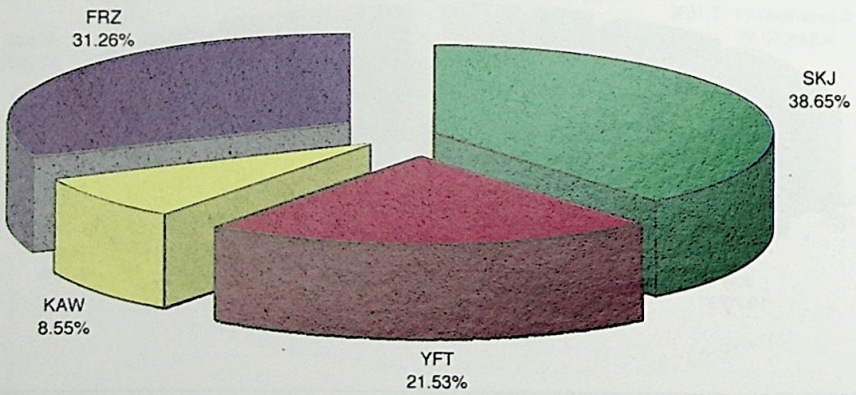
Monthly Landings of Tuna in Brunei - 1996 -



Tuna Landing by Species in Indonesia  
1996

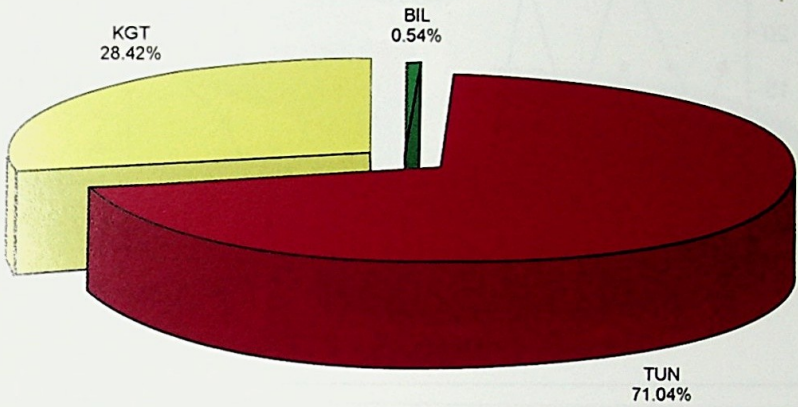


Tuna Landing by Species in Philippines  
-1996-

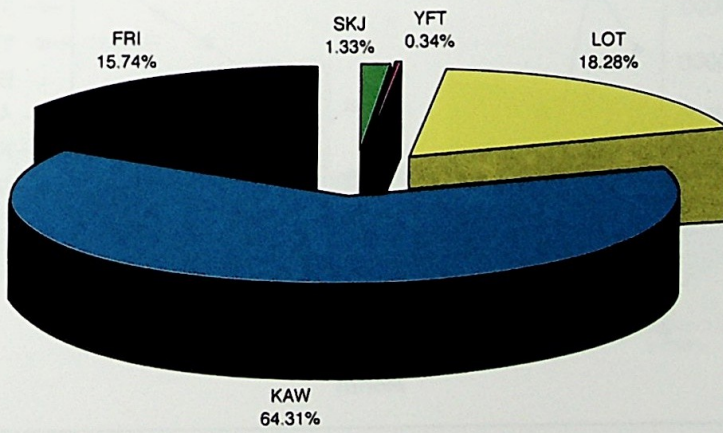




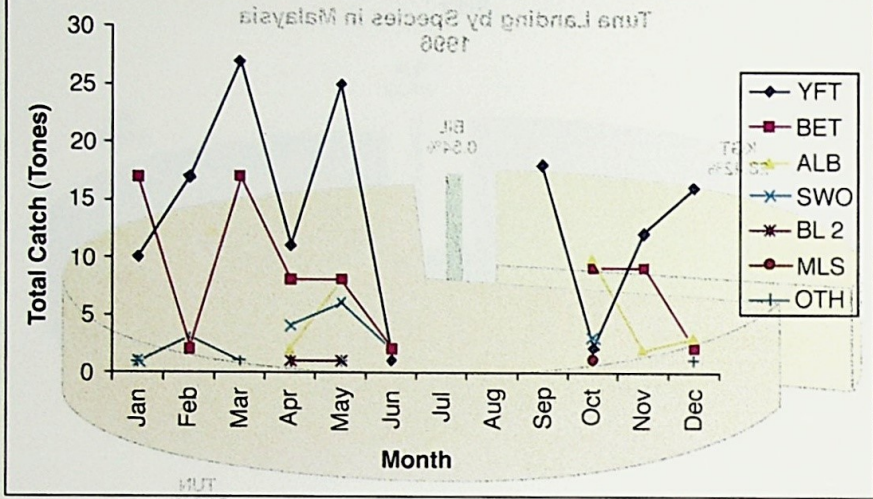
Tuna Landing by Species in Malaysia  
1996



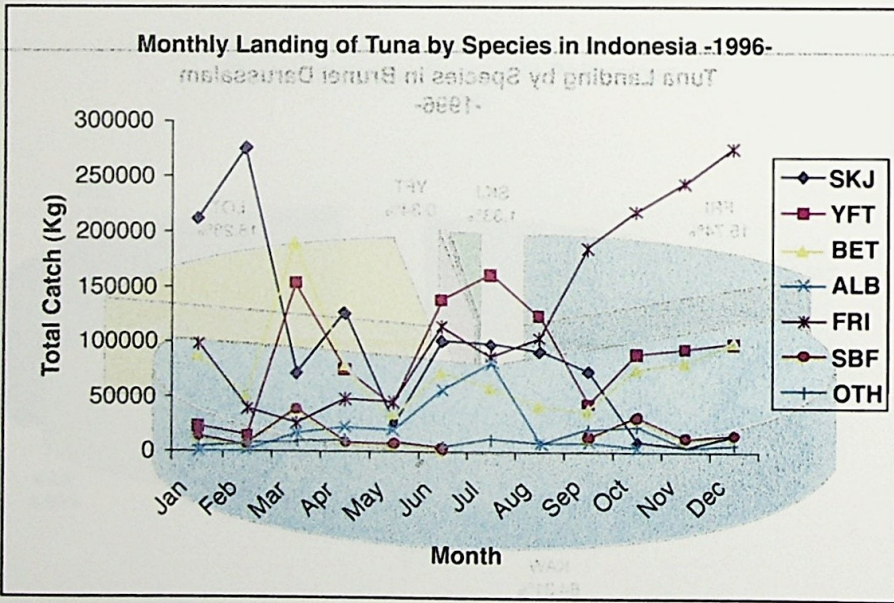
Tuna Landing by Species in Brunei Darussalam  
-1996-

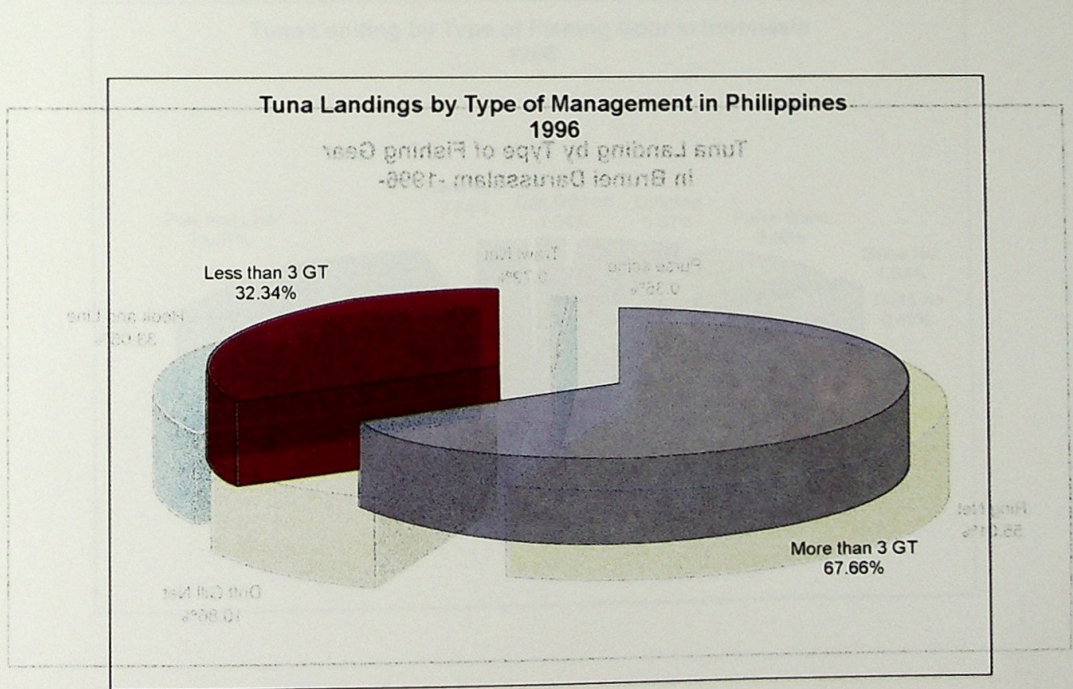
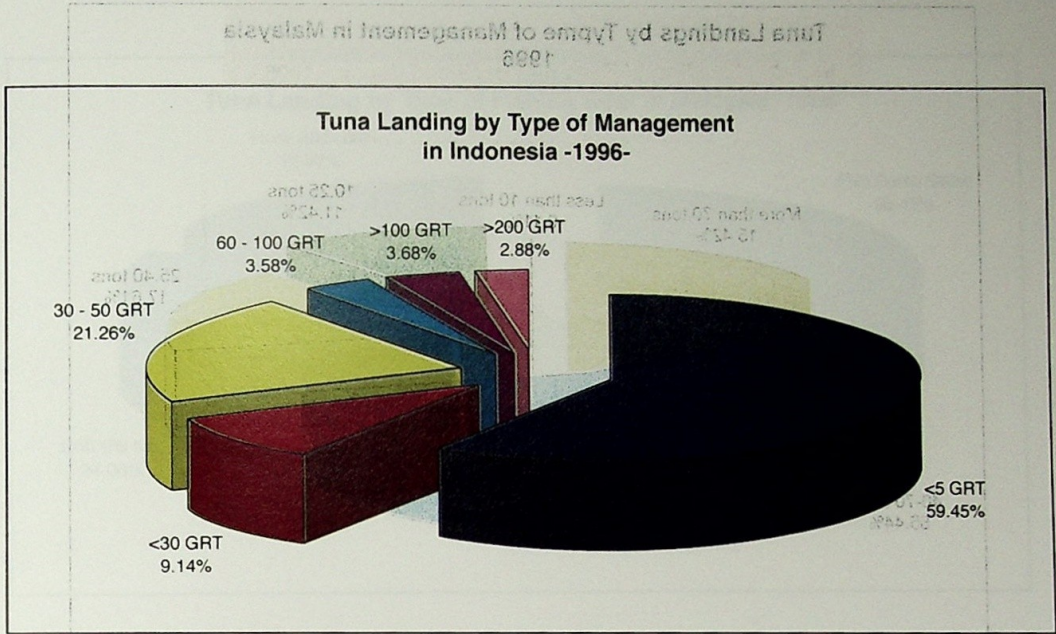


Monthly Landing of Tuna by Species in Japan - 1996 -

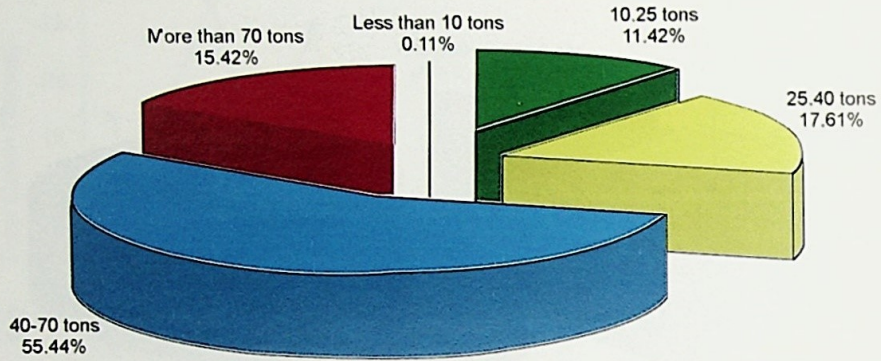


Monthly Landing of Tuna by Species in Indonesia - 1996 -

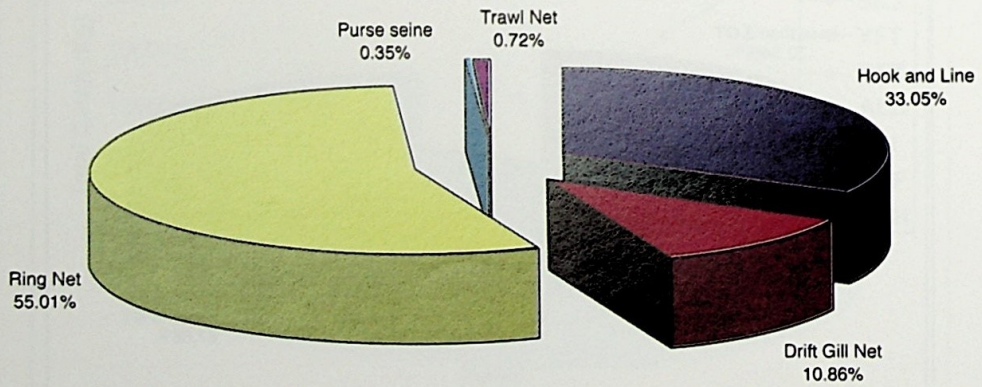




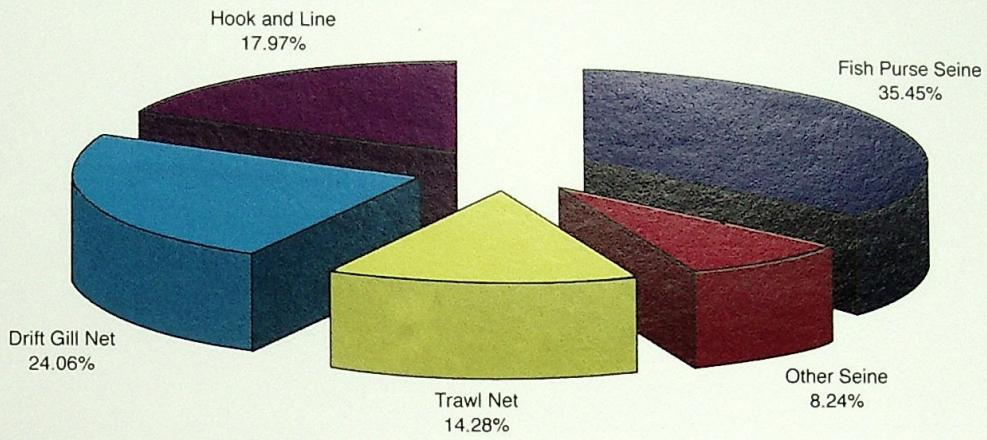
**Tuna Landings by Type of Management in Malaysia  
1996**



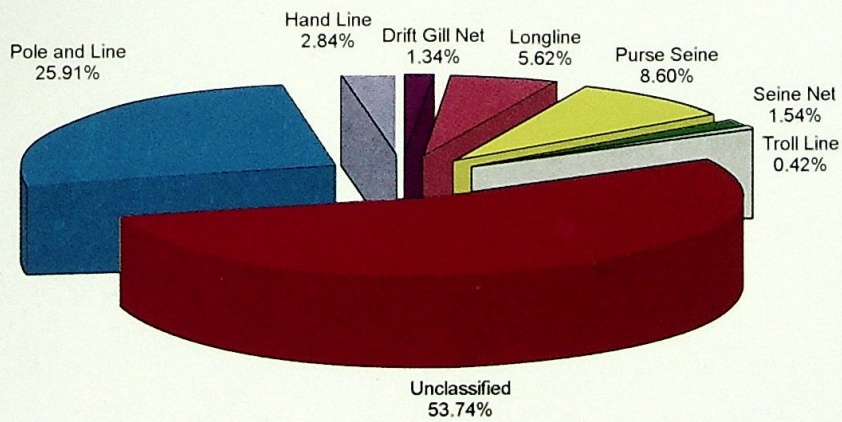
**Tuna Landing by Type of Fishing Gear  
In Brunei Darussalam -1996-**



Tuna Landing by Type of Fishing Gear in Malaysia -1996-



Tuna Landing by Type of Fishing Gear in Indonesia 1996



GEADEC MF